

For Research Use Only

# ADAM8 Monoclonal antibody, PBS Only (Detector)

Catalog Number: 68113-3-PBS



## Basic Information

Catalog Number: 68113-3-PBS	GenBank Accession Number: BC115404	Purification Method: Protein G purification
Concentration: 1mg/ml	GeneID (NCBI): 101	CloneNo.: 2E3F3
Source: Mouse	UNIPROT ID: P78325	Affinity: $K_D = 9.04 \times 10^{-11}$
Isotype: IgG1	Full Name: ADAM metalloproteinase domain 8	$K_{off} = 4.69 \times 10^{-6}$
Immunogen Catalog Number: AG17262	Calculated MW: 824 aa, 89 kDa	$K_{on} = 5.18 \times 10^4$

## Applications

**Tested Applications:**  
Cytometric bead array, Sandwich ELISA, Indirect ELISA, Sample test

**Species Specificity:**  
human

## Background Information

### Storage

**Storage:**  
Store at -80°C.  
**The product is shipped with ice packs. Upon receipt, store it immediately at -80°C**

**Storage Buffer:**  
PBS only, pH7.3

For technical support and original validation data for this product please contact:

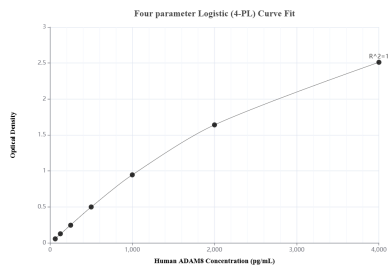
T: 4006900926

E: [Proteintech-CN@ptglab.com](mailto:Proteintech-CN@ptglab.com)

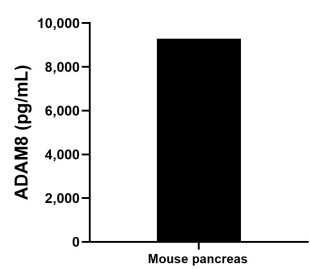
W: [ptgcn.com](http://ptgcn.com)

**This product is exclusively available under Proteintech Group brand and is not available to purchase from any other manufacturer.**

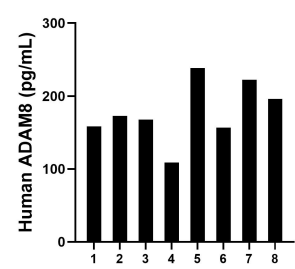
## Selected Validation Data



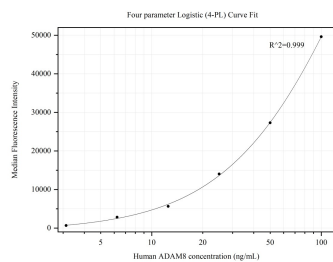
Sandwich ELISA standard curve of MP50122-1, Human ADAM8 Monoclonal Matched Antibody Pair - PBS only. 68113-2-PBS was coated to a plate as the capture antibody and incubated with serial dilutions of standard Ag17262. 68113-3-PBS was HRP conjugated as the detection antibody. Range: 62.5-4000 pg/mL



The mean ADAM8 concentration was determined to be 9,287.6 pg/mL in mouse pancreas tissue extract based on a 2.3 mg/mL extract load.



Serum of eight individual healthy human donors was measured. The ADAM8 concentration of detected samples was determined to be 177.6 pg/mL with a range of 108.9-238.5 pg/mL



Cytometric bead array standard curve of MP50122-1, ADAM8 Monoclonal Matched Antibody Pair, PBS Only. Capture antibody: 68113-2-PBS. Detection antibody: 68113-3-PBS. Standard:Ag17262. Range: 3.125-100 ng/mL