

For Research Use Only

# ADAM8 Monoclonal antibody, PBS Only

Catalog Number: 68113-1-PBS



## Basic Information

Catalog Number: 68113-1-PBS	GenBank Accession Number: BC115404	Purification Method: Protein G purification
Size: 1mg/ml	GeneID (NCBI): 101	CloneNo.: 3A12H2
Source: Mouse	UNIPROT ID: P78325	
Isotype: IgG1	Full Name: ADAM metalloproteinase domain 8	
Immunogen Catalog Number: AG17262	Calculated MW: 824 aa, 89 kDa	
	Observed MW: 90 kDa	

## Applications

Tested Applications:  
WB, Indirect ELISA

Species Specificity:  
human, pig

## Background Information

ADAM8 is a type I transmembrane (TM) glycoprotein consisting of an N-terminal prodomain, followed by a metalloproteinase-, disintegrin (DIS)-, cysteine-rich-, epidermal growth factor (EGF)-like- and TM domain and a cytoplasmic tail. Expression levels of ADAM8 in normal tissue are typically low and limited to a few distinct cell types in the lymphatic organs as components of the immune system, the central nervous system, bone, and the lung. This antibody can be used to detect endogenous ADAM8 with an apparent molecular weight of 90 kDa (the calculated MW). ADAM8 also can be detectable as a band with a molecular weight (MW) of 98 kDa, slightly larger than the calculated MW (90 kDa) (PMID:11050116).

## Storage

Storage:  
Store at -80°C.  
**The product is shipped with ice packs. Upon receipt, store it immediately at -80°C**

Storage Buffer:  
PBS Only

For technical support and original validation data for this product please contact:

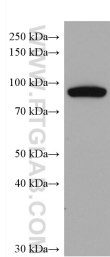
T: 4006900926

E: [Proteintech-CN@ptglab.com](mailto:Proteintech-CN@ptglab.com)

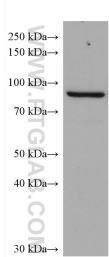
W: [ptgcn.com](http://ptgcn.com)

**This product is exclusively available under Proteintech Group brand and is not available to purchase from any other manufacturer.**

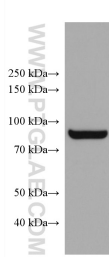
Selected Validation Data



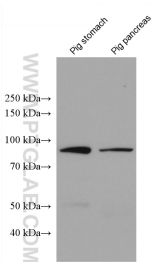
human testis tissue were subjected to SDS PAGE followed by western blot with 68113-1-Ig (ADAM8 antibody) at dilution of 1:2000 incubated at room temperature for 1.5 hours. This data was developed using the same antibody clone with 68113-1-PBS in a different storage buffer formulation.



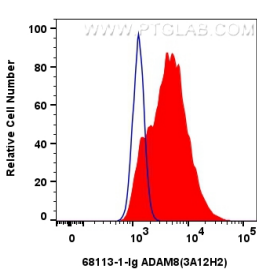
HaCaT cells were subjected to SDS PAGE followed by western blot with 68113-1-Ig (ADAM8 antibody) at dilution of 1:2000 incubated at room temperature for 1.5 hours. This data was developed using the same antibody clone with 68113-1-PBS in a different storage buffer formulation.



A431 cells were subjected to SDS PAGE followed by western blot with 68113-1-Ig (ADAM8 antibody) at dilution of 1:2000 incubated at room temperature for 1.5 hours. This data was developed using the same antibody clone with 68113-1-PBS in a different storage buffer formulation.



Various lysates were subjected to SDS PAGE followed by western blot with 68113-1-Ig (ADAM8 antibody) at dilution of 1:2000 incubated at room temperature for 1.5 hours. This data was developed using the same antibody clone with 68113-1-PBS in a different storage buffer formulation.



1x10<sup>6</sup> A431 cells were surface stained with 0.8 ug ADAM8 Monoclonal antibody (68113-1-Ig, Clone:3A12H2) and Coralite®488-Conjugated AffiniPure Goat Anti-Mouse IgG(H+L) (SA00013-1) (red), or 0.8 ug Mouse IgG1 Isotype Control (MOPC-21) (65124-1-Ig, Clone: MOPC-21) (blue). Cells were not fixed. This data was developed using the same antibody clone with 68113-1-PBS in a different storage buffer formulation.