

For Research Use Only

# CCDC123 Monoclonal antibody, PBS Only (Detector)

Catalog Number: 68112-2-PBS



## Basic Information

<b>Catalog Number:</b> 68112-2-PBS	<b>GenBank Accession Number:</b> BC136328	<b>Purification Method:</b> Protein G purification
<b>Source:</b> Mouse	<b>GeneID (NCBI):</b> 84902	<b>CloneNo.:</b> 1B5B4
<b>Isotype:</b> IgG1	<b>UNIPROT ID:</b> Q965T8	
<b>Immunogen Catalog Number:</b> AG28339	<b>Full Name:</b> coiled-coil domain containing 123	
	<b>Calculated MW:</b> 783 aa, 90 kDa	

## Applications

**Tested Applications:**  
Cytometric bead array, Indirect ELISA

**Species Specificity:**  
human

## Background Information

### Storage

**Storage:**  
Store at -80°C.  
**The product is shipped with ice packs. Upon receipt, store it immediately at -80°C**

**Storage Buffer:**  
PBS only, pH7.3

For technical support and original validation data for this product please contact:

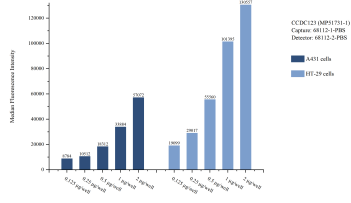
T: 4006900926

E: Proteintech-CN@ptglab.com

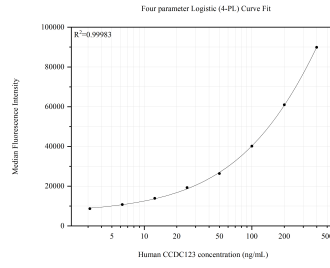
W: ptgcn.com

**This product is exclusively available under Proteintech Group brand and is not available to purchase from any other manufacturer.**

## Selected Validation Data



Cytometric bead array sample test of MP51731-1, CEP89, CCDC123 Monoclonal Matched Antibody Pair, PBS Only. Capture antibody: 68112-1-PBS. Detection antibody: 68112-2-PBS.



Cytometric bead array standard curve of MP51731-1, CEP89, CCDC123 Monoclonal Matched Antibody Pair, PBS Only. Capture antibody: 68112-1-PBS. Detection antibody: 68112-2-PBS. Standard: Ag28339. Range: 3.125-400 ng/mL.