

For Research Use Only

NLRP3 Monoclonal antibody, PBS Only (Detector)

Catalog Number: 68102-2-PBS



Basic Information

Catalog Number:

68102-2-PBS

Concentration:

1000 µg/ml

Source:

Mouse

Isotype:

IgG2a

Immunogen Catalog Number:

AG26289

GenBank Accession Number:

NM_001079821

GeneID (NCBI):

114548

UNIPROT ID:

Q96P20

Full Name:

NLR family, pyrin domain containing

3

Calculated MW:

118 kDa

Purification Method:

Protein A purification

CloneNo.:

4D4C1

Applications

Tested Applications:

Cytometric bead array, Sandwich ELISA, Indirect ELISA, Sample test

Species Specificity:

human

Background Information

Storage

Storage:

Store at -80°C.

The product is shipped with ice packs. Upon receipt, store it immediately at -80°C

Storage Buffer:

PBS Only

For technical support and original validation data for this product please contact:

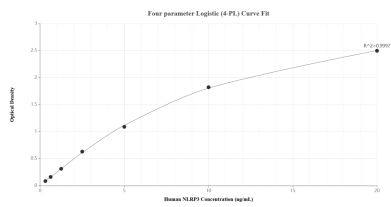
T: 4006900926

E: Proteintech-CN@ptglab.com

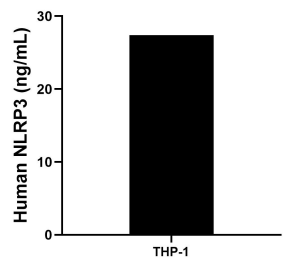
W: ptgcn.com

This product is exclusively available under Proteintech Group brand and is not available to purchase from any other manufacturer.

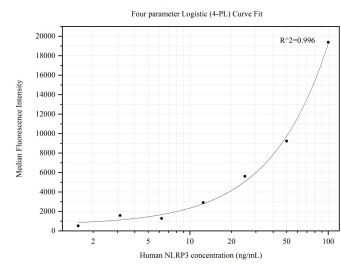
Selected Validation Data



Sandwich ELISA standard curve of MP50203-1, Human NLRP3 Monoclonal Matched Antibody Pair - PBS only. 68102-1-PBS was coated to a plate as the capture antibody and incubated with serial dilutions of standard Ag26289. 68102-2-PBS was HRP conjugated as the detection antibody. Range: 0.313-20 ng/mL



The mean NLRP3 concentration was determined to be 27.37 ng/mL in THP-1 cell extract based on a 1.50 mg/mL extract load.



Cytometric bead array standard curve of MP50203-1, NLRP3 Monoclonal Matched Antibody Pair, PBS Only. Capture antibody: 68102-1-PBS. Detection antibody: 68102-2-PBS. Standard: Ag26289. Range: 1.563-100 ng/mL