

For Research Use Only

# PRAME Monoclonal antibody, PBS Only (Detector)

Catalog Number: 68097-3-PBS



## Basic Information

Catalog Number:

68097-3-PBS

Concentration:

1 mg/ml

Source:

Mouse

Isotype:

IgG2b

Immunogen Catalog Number:

AG1906

GenBank Accession Number:

BC014074

GeneID (NCBI):

23532

UNIPROT ID:

P78395

Full Name:

preferentially expressed antigen in melanoma

Calculated MW:

509 aa, 58 kDa

Purification Method:

Protein A purification

CloneNo.:

2G1H5

## Applications

Tested Applications:

Cytometric bead array, Sandwich ELISA, Indirect ELISA, Sample test

Species Specificity:

human

## Background Information

### Storage

Storage:

Store at -80°C.

The product is shipped with ice packs. Upon receipt, store it immediately at -80°C

Storage Buffer:

PBS Only

For technical support and original validation data for this product please contact:

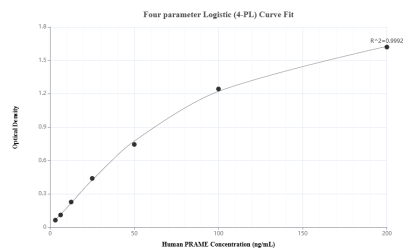
T: 4006900926

E: [Proteintech-CN@ptglab.com](mailto:Proteintech-CN@ptglab.com)

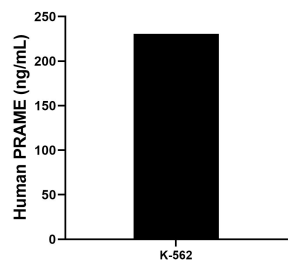
W: [ptgcn.com](http://ptgcn.com)

This product is exclusively available under Proteintech Group brand and is not available to purchase from any other manufacturer.

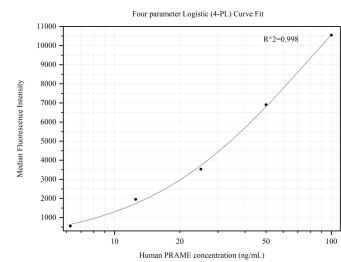
## Selected Validation Data



Sandwich ELISA standard curve of MP50344-1, Human PRAME Monoclonal Matched Antibody Pair - PBS only. 68097-2-PBS was coated to a plate as the capture antibody and incubated with serial dilutions of standard Ag1906. 68097-3-PBS was HRP conjugated as the detection antibody. Range: 3.13-200 ng/mL



The mean PRAME concentration was determined to be 230.66 ng/mL in K-562 cell extract based on a 2.5 mg/mL extract load.



Cytometric bead array standard curve of MP50344-1, PRAME Monoclonal Matched Antibody Pair, PBS Only. Capture antibody: 68097-2-PBS. Detection antibody: 68097-3-PBS. Standard: Ag1906. Range: 6.25-100 ng/mL