

For Research Use Only

# PRAME Monoclonal antibody, PBS Only (Capture)

Catalog Number: 68097-2-PBS



## Basic Information

Catalog Number: 68097-2-PBS	GenBank Accession Number: BC014074	Purification Method: Protein G purification
Concentration: 1 mg/ml	GeneID (NCBI): 23532	CloneNo.: 5H11B6
Source: Mouse	UNIPROT ID: P78395	
Isotype: IgG1	Full Name: preferentially expressed antigen in melanoma	
Immunogen Catalog Number: AG1906	Calculated MW: 509 aa, 58 kDa	

## Applications

**Tested Applications:**  
Cytometric bead array, Sandwich ELISA, Indirect ELISA, Sample test

**Species Specificity:**  
human

## Background Information

### Storage

**Storage:**  
Store at -80°C.  
**The product is shipped with ice packs. Upon receipt, store it immediately at -80°C**

**Storage Buffer:**  
PBS Only

For technical support and original validation data for this product please contact:

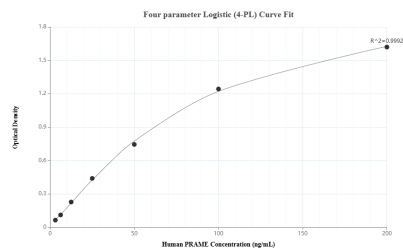
T: 4006900926

E: [Proteintech-CN@ptglab.com](mailto:Proteintech-CN@ptglab.com)

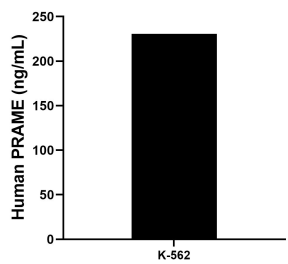
W: [ptgcn.com](http://ptgcn.com)

**This product is exclusively available under Proteintech Group brand and is not available to purchase from any other manufacturer.**

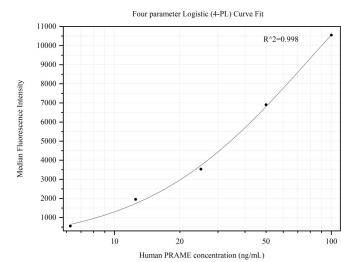
## Selected Validation Data



Sandwich ELISA standard curve of MP50344-1, Human PRAME Monoclonal Matched Antibody Pair - PBS only. 68097-2-PBS was coated to a plate as the capture antibody and incubated with serial dilutions of standard Ag1906. 68097-3-PBS was HRP conjugated as the detection antibody. Range: 3.13-200 ng/mL



The mean PRAME concentration was determined to be 230.66 ng/mL in K-562 cell extract based on a 2.5 mg/mL extract load.



Cytometric bead array standard curve of MP50344-1, PRAME Monoclonal Matched Antibody Pair, PBS Only. Capture antibody: 68097-2-PBS. Detection antibody: 68097-3-PBS. Standard: Ag1906. Range: 6.25-100 ng/mL