

For Research Use Only

Annexin VI Monoclonal antibody, PBS Only

Catalog Number: 68086-1-PBS

Featured Product



Basic Information

Catalog Number:

68086-1-PBS

Source:

Mouse

Isotype:

IgG1

Immunogen Catalog Number:

AG3263

GenBank Accession Number:

BC017046

GeneID (NCBI):

309

UNIPROT ID:

P08133

Full Name:

annexin A6

Calculated MW:

673 aa, 76 kDa

Observed MW:

67 kDa

Purification Method:

Protein G purification

CloneNo.:

2H7G7

Applications

Tested Applications:

WB, IF/ICC, FC (Intra), Indirect ELISA

Species Specificity:

human, mouse, rat, pig, rabbit

Background Information

ANXA6, also called CBP68, or 67 kDa calelectrin, belongs to a family of calcium-dependent membrane and phospholipid binding proteins. Several members of the annexin family have been implicated in membrane-related events along exocytotic and endocytotic pathways. The annexin VI gene is approximately 60 kbp long and contains 26 exons. It encodes a protein of about 68 kDa that consists of eight 68-amino acid repeats separated by linking sequences of variable lengths. It is highly similar to human annexins I and II sequences, each of which contain four such repeats. Annexin VI has been implicated in mediating the endosome aggregation and vesicle fusion in secreting epithelia during exocytosis.

Storage

Storage:

Store at -80°C.

The product is shipped with ice packs. Upon receipt, store it immediately at -80°C

Storage Buffer:

PBS only, pH7.3

For technical support and original validation data for this product please contact:

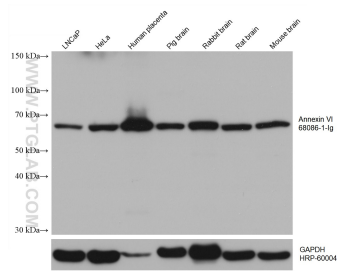
T: 4006900926

E: Proteintech-CN@ptglab.com

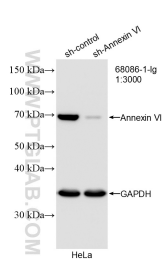
W: ptgcn.com

This product is exclusively available under Proteintech Group brand and is not available to purchase from any other manufacturer.

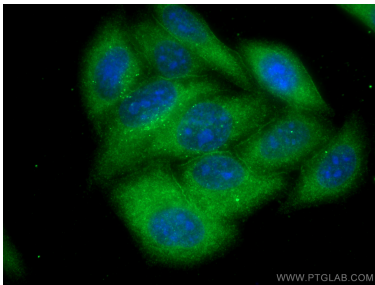
Selected Validation Data



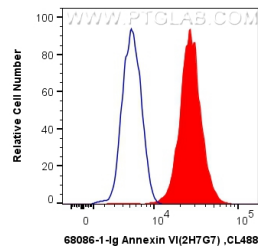
Various lysates were subjected to SDS PAGE followed by western blot with 68086-1-Ig (Annexin VI antibody) at dilution of 1:5000 incubated at room temperature for 1.5 hours. The membrane was stripped and reblotted with HRP-conjugated GAPDH Monoclonal antibody (HRP-60004) as loading control. This data was developed using the same antibody clone with 68086-1-PBS in a different storage buffer formulation.



WB result of Annexin VI antibody (68086-1-Ig; 1:3000; incubated at room temperature for 1.5 hours) with sh-Control and sh-Annexin VI transfected HeLa cells. This data was developed using the same antibody clone with 68086-1-PBS in a different storage buffer formulation.



Immunofluorescent analysis of (-20°C Methanol) fixed HepG2 cells using Annexin VI antibody (68086-1-Ig, Clone: 2H7G7) at dilution of 1:400 and CoraLite®488-Conjugated AffiniPure Goat Anti-Mouse IgG(H+L). This data was developed using the same antibody clone with 68086-1-PBS in a different storage buffer formulation.



1X10⁶ K-562 cells were intracellularly stained with 0.4 ug Anti-Human Annexin VI (68086-1-Ig, Clone:2H7G7) and CoraLite®488-Conjugated AffiniPure Goat Anti-Mouse IgG(H+L) at dilution 1:1000 (red), or 0.4 ug Mouse IgG1 Isotype Control (MOPC-21) (65124-1-Ig, Clone: MOPC-21) (blue). Cells were fixed with 4% PFA and permeabilized with Flow Cytometry Perm Buffer. This data was developed using the same antibody clone with 68086-1-PBS in a different storage buffer