

# Annexin VI Monoclonal antibody

Catalog Number: 68086-1-Ig

## Basic Information

**Catalog Number:**

68086-1-Ig

**Size:**

500 µg/ml

**Source:**

Mouse

**Isotype:**

IgG1

**Immunogen Catalog Number:**

AG3263

**GenBank Accession Number:**

BC017046

**GeneID (NCBI):**

309

**UNIPROT ID:**

P08133

**Full Name:**

annexin A6

**Calculated MW:**

673 aa, 76 kDa

**Observed MW:**

67 kDa

**Purification Method:**

Protein G purification

**CloneNo.:**

2H7G7

**Recommended Dilutions:**

WB 1:2000-1:10000

IF/ICC 1:200-1:800

## Applications

**Tested Applications:**

WB, IF/ICC, FC (Intra), ELISA

**Species Specificity:**

human, mouse, rat, pig, rabbit

**Positive Controls:**

WB : LNCaP cells, HeLa cells, human placenta tissue, pig brain tissue, rabbit brain tissue, rat brain tissue, mouse brain tissue

IF/ICC : HepG2 cells,

## Background Information

ANXA6, also called CBP68, or 67 kDa calelectrin, belongs to a family of calcium-dependent membrane and phospholipid binding proteins. Several members of the annexin family have been implicated in membrane-related events along exocytotic and endocytotic pathways. The annexin VI gene is approximately 60 kbp long and contains 26 exons. It encodes a protein of about 68 kDa that consists of eight 68-amino acid repeats separated by linking sequences of variable lengths. It is highly similar to human annexins I and II sequences, each of which contain four such repeats. Annexin VI has been implicated in mediating the endosome aggregation and vesicle fusion in secreting epithelia during exocytosis.

## Storage

**Storage:**

Store at -20°C. Stable for one year after shipment.

**Storage Buffer:**

PBS with 0.02% sodium azide and 50% glycerol pH 7.3.

Aliquoting is unnecessary for -20°C storage

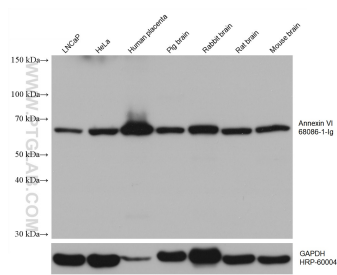
For technical support and original validation data for this product please contact:

T: 4006900926

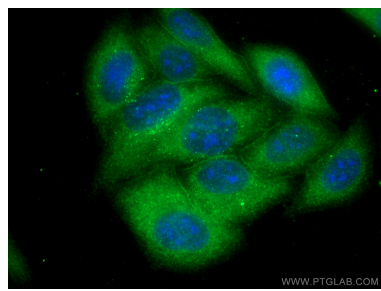
E: [Proteintech-CN@ptglab.com](mailto:Proteintech-CN@ptglab.com)W: [ptgcn.com](http://ptgcn.com)

This product is exclusively available under Proteintech Group brand and is not available to purchase from any other manufacturer.

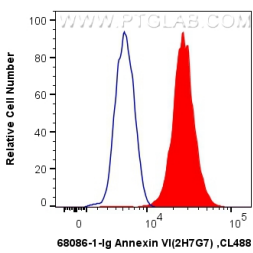
## Selected Validation Data



Various lysates were subjected to SDS PAGE followed by western blot with 68086-1-Ig (Annexin VI antibody) at dilution of 1:5000 incubated at room temperature for 1.5 hours. The membrane was stripped and reblotted with HRP-conjugated GAPDH Monoclonal antibody (HRP-60004) as loading control.



Immunofluorescent analysis of (-20°C Methanol) fixed HepG2 cells using Annexin VI antibody (68086-1-Ig, Clone: 2H7G7 ) at dilution of 1:400 and CoraLite®488-Conjugated AffiniPure Goat Anti-Mouse IgG(H+L).



1X10<sup>6</sup> K-562 cells were intracellularly stained with 0.4 ug Anti-Human Annexin VI (68086-1-Ig, Clone:2H7G7) and CoraLite®488-Conjugated AffiniPure Goat Anti-Mouse IgG(H+L) at dilution 1:1000 (red), or 0.4 ug Mouse IgG1 Isotype Control (MOPC-21) (65124-1-Ig, Clone: MOPC-21) (blue). Cells were fixed with 4% PFA and permeabilized with Flow Cytometry Perm Buffer (PF00011-C).