

DPEP1 Monoclonal antibody

Catalog Number: 68081-1-Ig

Basic Information

Catalog Number:

68081-1-Ig

Size:

1000 ug/ml

Source:

Mouse

Isotype:

IgG2a

Immunogen Catalog Number:

AG14591

GenBank Accession Number:

BC017023

GeneID (NCBI):

1800

UNIPROT ID:

P16444

Full Name:

dipeptidase 1 (renal)

Calculated MW:

411 aa, 46 kDa

Observed MW:

46 kDa

Purification Method:

Protein A purification

CloneNo.:

2B4F4

Recommended Dilutions:

WB 1:5000-1:50000

IHC 1:500-1:2000

IF-P 1:200-1:800

Applications

Tested Applications:

WB, IHC, IF-P, ELISA

Species Specificity:

human, mouse, rat, pig, rabbit

Note-IHC: suggested antigen retrieval with TE buffer pH 9.0; (*) Alternatively, antigen retrieval may be performed with citrate buffer pH 6.0

Positive Controls:

WB : human testis tissue, rabbit kidney tissue, pig pancreas tissue, rat pancreas tissue, HepG2 cells

IHC : human kidney tissue, human colon cancer tissue

IF-P : mouse kidney tissue,

Background Information

Storage

Storage:

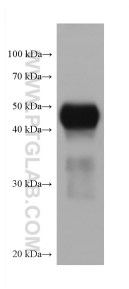
Store at -20°C. Stable for one year after shipment.

Storage Buffer:

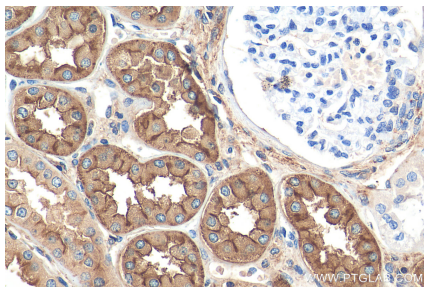
PBS with 0.02% sodium azide and 50% glycerol pH 7.3.

Aliquoting is unnecessary for -20°C storage

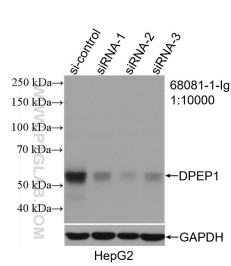
Selected Validation Data



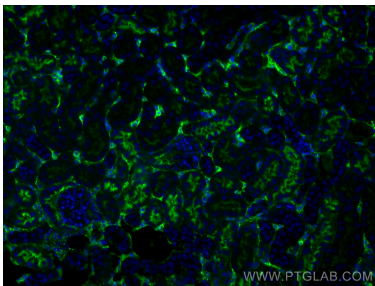
human testis tissue were subjected to SDS PAGE followed by western blot with 68081-1-Ig (DPEP1 antibody) at dilution of 1:10000 incubated at room temperature for 1.5 hours.



Immunohistochemical analysis of paraffin-embedded human kidney tissue slide using 68081-1-Ig (DPEP1 antibody) at dilution of 1:1000 (under 40x lens). Heat mediated antigen retrieval with Tris-EDTA buffer (pH 9.0).



WB result of DPEP1 antibody (68081-1-Ig; 1:10000; incubated at room temperature for 1.5 hours) with sh-Control and sh-DPEP1 transfected HepG2 cells.



Immunofluorescent analysis of (4% PFA) fixed mouse kidney tissue using DPEP1 antibody (68081-1-Ig, Clone: 2B4F4) at dilution of 1:400 and CoraLite®488-Conjugated AffiniPure Goat Anti-Mouse IgG(H+L).