

For Research Use Only

# PTPRF Monoclonal antibody, PBS Only



Catalog Number: 68070-1-PBS

## Basic Information

Catalog Number:

68070-1-PBS

Size:

1 mg/ml

Source:

Mouse

Isotype:

IgG1

Immunogen Catalog Number:

AG25441

GenBank Accession Number:

BC048768

GeneID (NCBI):

5792

UNIPROT ID:

P10586

Full Name:

protein tyrosine phosphatase, receptor type, F

Calculated MW:

1898 aa, 212 kDa

Observed MW:

150 kDa, 213 kDa

Purification Method:

Protein G purification

CloneNo.:

2D12G7

## Applications

Tested Applications:

WB, Indirect ELISA

Species Specificity:

Human, mouse, rat

## Background Information

### Storage

Storage:

Store at -80°C.

The product is shipped with ice packs. Upon receipt, store it immediately at -80°C

Storage Buffer:

PBS Only

For technical support and original validation data for this product please contact:

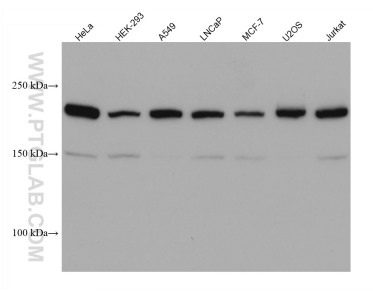
T: 4006900926

E: [Proteintech-CN@ptglab.com](mailto:Proteintech-CN@ptglab.com)

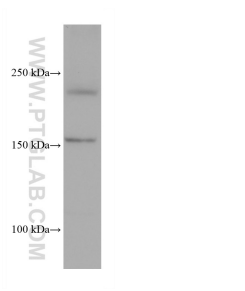
W: [ptgcn.com](http://ptgcn.com)

This product is exclusively available under Proteintech Group brand and is not available to purchase from any other manufacturer.

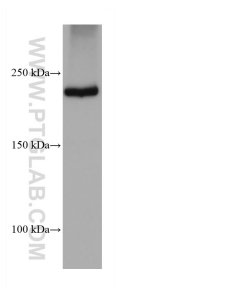
## Selected Validation Data



Various lysates were subjected to SDS PAGE followed by western blot with 68070-1-Ig (PTPRF antibody) at dilution of 1:3000 incubated at room temperature for 1.5 hours. This data was developed using the same antibody clone with 68070-1-PBS in a different storage buffer formulation.



HSC-T6 cells were subjected to SDS PAGE followed by western blot with 68070-1-Ig (PTPRF antibody) at dilution of 1:3000 incubated at room temperature for 1.5 hours. This data was developed using the same antibody clone with 68070-1-PBS in a different storage buffer formulation.



4T1 cells were subjected to SDS PAGE followed by western blot with 68070-1-Ig (PTPRF antibody) at dilution of 1:3000 incubated at room temperature for 1.5 hours. This data was developed using the same antibody clone with 68070-1-PBS in a different storage buffer formulation.