

For Research Use Only

# Ferritin light chain Monoclonal antibody, PBS Only



Catalog Number: 68068-1-PBS

## Basic Information

Catalog Number: 68068-1-PBS	GenBank Accession Number: BC008439	Purification Method: Protein G purification
Size: 1 mg/ml	GeneID (NCBI): 2512	CloneNo.: 1F9F5
Source: Mouse	UNIPROT ID: P02792	
Isotype: IgG1	Full Name: ferritin, light polypeptide	
Immunogen Catalog Number: AG20637	Calculated MW: 19 kDa	
	Observed MW: 18 kDa	

## Applications

Tested Applications:  
WB, IHC, IF, ELISA

Species Specificity:  
Human, Mouse

## Background Information

FTL belongs to the ferritin family. It stores iron in a soluble, non-toxic, readily available form. FTL is important for iron homeostasis. It plays a role in delivery of iron to cells. FTL mediates iron uptake in capsule cells of the developing kidney. Mutation of FTL will cause hereditary hyperferritinemia-cataract syndrome (HHCS) or neurodegeneration with brain iron accumulation type 3 (NBIA3). Ferritin light polypeptide (FTL) and ferritin heavy polypeptide (FTH1) were the main constituents the striatum and cerebellar cortex revealed.

## Storage

Storage:  
Store at -80°C.

The product is shipped with ice packs. Upon receipt, store it immediately at -80°C

Storage Buffer:  
PBS only

For technical support and original validation data for this product please contact:

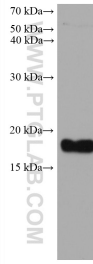
T: 4006900926

E: [Proteintech-CN@ptglab.com](mailto:Proteintech-CN@ptglab.com)

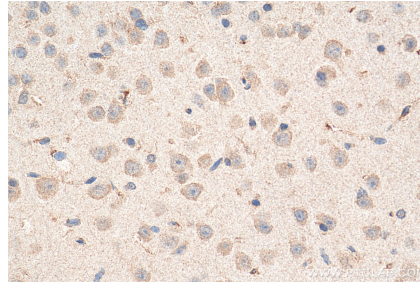
W: [ptgcn.com](http://ptgcn.com)

This product is exclusively available under Proteintech Group brand and is not available to purchase from any other manufacturer.

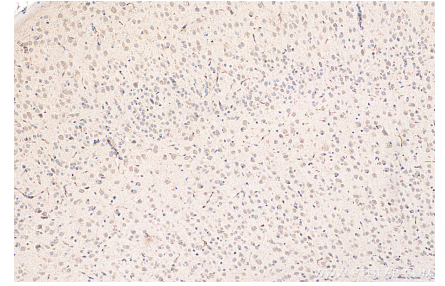
## Selected Validation Data



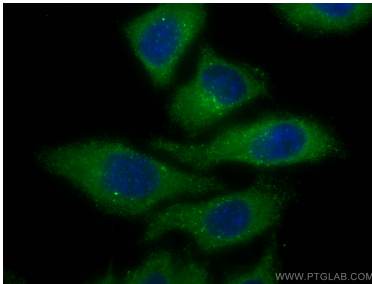
A549 cells were subjected to SDS PAGE followed by western blot with 68068-1-Ig (Ferritin light chain antibody) at dilution of 1:10000 incubated at room temperature for 1.5 hours. This data was developed using the same antibody clone with 68068-1-PBS in a different storage buffer formulation.



Immunohistochemical analysis of paraffin-embedded mouse brain tissue slide using 68068-1-Ig (Ferritin light chain antibody) at dilution of 1:1000 (under 40x lens). Heat mediated antigen retrieval with Tris-EDTA buffer (pH 9.0). This data was developed using the same antibody clone with 68068-1-PBS in a different storage buffer formulation.



Immunohistochemical analysis of paraffin-embedded mouse brain tissue slide using 68068-1-Ig (Ferritin light chain antibody) at dilution of 1:1000 (under 10x lens). Heat mediated antigen retrieval with Tris-EDTA buffer (pH 9.0). This data was developed using the same antibody clone with 68068-1-PBS in a different storage buffer formulation.



Immunofluorescent analysis of (-20°C Methanol) fixed HepG2 cells using FTL antibody (68068-1-Ig, Clone: 1F9F5 ) at dilution of 1:800 and CoraLite®488-Conjugated AffiniPure Goat Anti-Mouse IgG(H+L). This data was developed using the same antibody clone with 68068-1-PBS in a different storage buffer formulation.