

For Research Use Only

EEA1 Monoclonal antibody, PBS Only

Catalog Number: 68065-1-PBS

Featured Product



Basic Information

Catalog Number:

68065-1-PBS

Concentration:

1 mg/ml

Source:

Mouse

Isotype:

IgG1

Immunogen Catalog Number:

AG28814

GenBank Accession Number:

NM_003566

GeneID (NCBI):

8411

UNIPROT ID:

Q15075

Full Name:

early endosome antigen 1

Calculated MW:

162 kDa

Observed MW:

162 kDa

Purification Method:

Protein A purification

CloneNo.:

1E11E4

Applications

Tested Applications:

WB, IF/ICC, Indirect ELISA

Species Specificity:

human, mouse, rat

Background Information

Early endosome antigen 1 (EEA1) is a marker of early endosomes and has an important role in endosomal trafficking. EEA1 contains coiled-coil regions and an FYVE-type zinc finger which interacts with phosphatidylinositol-3-phosphate. EEA1 functions as a Rab5 effector, mediates endosome docking and, together with SNAREs, leads to membrane fusion.

Storage

Storage:

Store at -80°C.

The product is shipped with ice packs. Upon receipt, store it immediately at -80°C

Storage Buffer:

PBS Only

For technical support and original validation data for this product please contact:

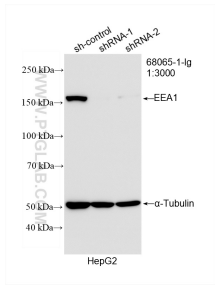
T: 4006900926

E: Proteintech-CN@ptglab.com

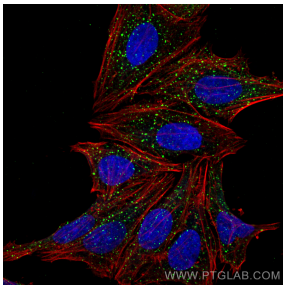
W: ptgcn.com

This product is exclusively available under Proteintech Group brand and is not available to purchase from any other manufacturer.

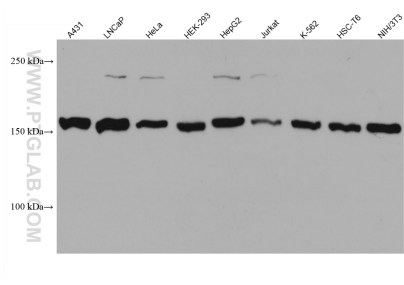
Selected Validation Data



WB result of EEA1 antibody (68065-1-Ig; 1:3000; incubated at room temperature for 1.5 hours) with sh-Control and sh-EEA1 transfected HepG2 cells. This data was developed using the same antibody clone with 68065-1-PBS in a different storage buffer formulation.



Immunofluorescent analysis of (4% PFA) fixed HepG2 cells using EEA1 antibody (68065-1-Ig, Clone: 1E11E4) at dilution of 1:3000 and CoraLite®488-Conjugated AffiniPure Goat Anti-Mouse IgG(H+L), CL594-Phalloidin (red). This data was developed using the same antibody clone with 68065-1-PBS in a different storage buffer formulation.



Various lysates were subjected to SDS PAGE followed by western blot with 68065-1-Ig (EEA1 antibody) at dilution of 1:10000 incubated at room temperature for 1.5 hours. This data was developed using the same antibody clone with 68065-1-PBS in a different storage buffer formulation.