

# TBC1D4 Monoclonal antibody

Catalog Number: 68063-1-Ig

## Basic Information

**Catalog Number:**

68063-1-Ig

**Size:**

1000 µg/ml

**Source:**

Mouse

**Isotype:**

IgG1

**Immunogen Catalog Number:**

AG20341

**GenBank Accession Number:**

BC151239

**GeneID (NCBI):**

9882

**UNIPROT ID:**

O60343

**Full Name:**

TBC1 domain family, member 4

**Calculated MW:**

1299 aa, 147 kDa

**Observed MW:**

160 kDa

**Purification Method:**

Protein G purification

**CloneNo.:**

1E2H2

**Recommended Dilutions:**

WB 1:1000-1:6000

## Applications

**Tested Applications:**

WB, ELISA

**Species Specificity:**

Human

**Positive Controls:**

WB : HeLa cells, HepG2 cells, HCT 116 cells, LNCaP cells, Jurkat cells, K-562 cells

## Background Information

TBC1D4, also named as AS160, KIAA0603, may act as a GTPase-activating protein for RAB2A, RAB8A, RAB10 and RAB14. Isoform 2 promotes insulin-induced glucose transporter SLC2A4/GLUT4 translocation at the plasma membrane, thus increasing glucose uptake. The antibody recognizes all the isoform of TBC1D4.

## Storage

**Storage:**

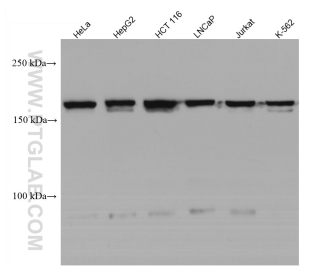
Store at -20°C.

**Storage Buffer:**

PBS with 0.02% sodium azide and 50% glycerol pH 7.3.

Aliquoting is unnecessary for -20°C storage

## Selected Validation Data



Various lysates were subjected to SDS PAGE followed by western blot with 68063-1-Ig (TBC1D4 antibody) at dilution of 1:3000 incubated at room temperature for 1.5 hours.