

For Research Use Only

NBR1 Monoclonal antibody

Catalog Number: 68062-1-Ig



Basic Information

Catalog Number: 68062-1-Ig	GenBank Accession Number: BC009808	Purification Method: Protein G purification
Size: 1000 µg/ml	GeneID (NCBI): 4077	CloneNo.: 1F2B2
Source: Mouse	UNIPROT ID: Q14596	Recommended Dilutions: WB 1:2000-1:10000
Isotype: IgG1	Full Name: neighbor of BRCA1 gene 1	
Immunogen Catalog Number: AG8652	Calculated MW: 966 aa, 107 kDa	
	Observed MW: 140 kDa	

Applications

Tested Applications:
WB, ELISA

Species Specificity:
Human, mouse, rat

Positive Controls:

WB : NCCIT cells, hTERT-RPE1 cells, HeLa cells, HEK-293 cells, K-562 cells, rat testis tissue, mouse testis tissue

Background Information

NBR1, also named as 1A13B, KIAA0049 and M1752, acts probably as a receptor for selective autophagosomal degradation of ubiquitinated targets. NBR1 and P62 can bind to autophagic effector proteins (Atg8 in yeast, MAP1LC3 protein family in mammals) anchored in the membrane of autophagosomes. It is a highly conserved multidomain scaffold protein with proposed roles in endocytic trafficking and selective autophagy. NBR1 is a novel PB1 adapter in Th2 differentiation and asthma. It functions as an autophagy receptor involved in targeting ubiquitinated proteins for degradation. It also has a dual role as a scaffold protein to regulate growth-factor receptor and downstream signaling pathways. Observed MW of NBR1 is 140 kDa (PMID: 22654911, PMID: 22484440).

Storage

Storage:
Store at -20°C.

Storage Buffer:
PBS with 0.02% sodium azide and 50% glycerol pH 7.3.

Aliquoting is unnecessary for -20°C storage

For technical support and original validation data for this product please contact:

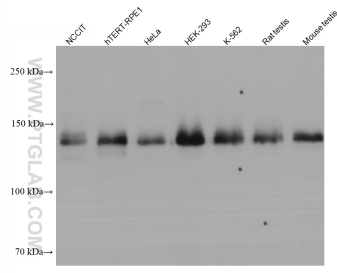
T: 4006900926

E: Proteintech-CN@ptglab.com

W: ptgcn.com

This product is exclusively available under Proteintech Group brand and is not available to purchase from any other manufacturer.

Selected Validation Data



Various lysates were subjected to SDS PAGE followed by western blot with 68062-1-Ig (NBR1 antibody) at dilution of 1:5000 incubated at room temperature for 1.5 hours.