

For Research Use Only

# NSF Monoclonal antibody

Catalog Number: 68061-1-Ig **Featured Product**



## Basic Information

**Catalog Number:**

68061-1-Ig

**Size:**

1000 µg/ml

**Source:**

Mouse

**Isotype:**

IgG2a

**Immunogen Catalog Number:**

AG15422

**GenBank Accession Number:**

BC030613

**GeneID (NCBI):**

4905

**UNIPROT ID:**

P46459

**Full Name:**

N-ethylmaleimide-sensitive factor

**Calculated MW:**

744 aa, 83 kDa

**Observed MW:**

70-83 kDa

**Purification Method:**

Protein A purification

**CloneNo.:**

2B6H6

**Recommended Dilutions:**

WB 1:5000-1:50000

IF 1:300-1:1200

## Applications

**Tested Applications:**

IF-P, WB, ELISA

**Species Specificity:**

Human, Pig, Rabbit, Rat, Mouse, Chicken

**Positive Controls:**

**WB :** pig brain tissue, SH-SY5Y cells, PC-12 cells, HEK-293 cells, Rabbit brain tissue, Rat brain tissue, Mouse brain tissue, Chicken brain tissue

**IF :** mouse brain tissue,

## Background Information

### Storage

**Storage:**

Store at -20°C. Stable for one year after shipment.

**Storage Buffer:**

PBS with 0.02% sodium azide and 50% glycerol pH 7.3.

Aliquoting is unnecessary for -20°C storage

For technical support and original validation data for this product please contact:

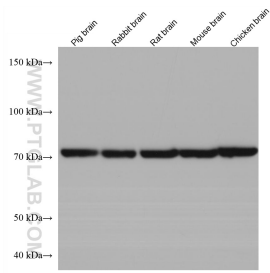
T: 4006900926

E: [Proteintech-CN@ptglab.com](mailto:Proteintech-CN@ptglab.com)

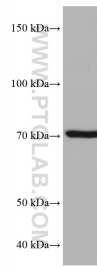
W: [ptgcn.com](http://ptgcn.com)

**This product is exclusively available under Proteintech Group brand and is not available to purchase from any other manufacturer.**

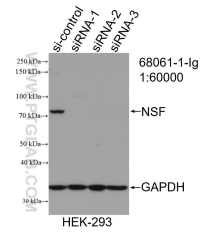
## Selected Validation Data



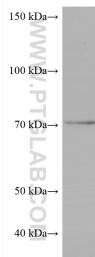
Various lysates were subjected to SDS PAGE followed by western blot with 68061-1-Ig (NSF antibody) at dilution of 1:10000 incubated at room temperature for 1.5 hours.



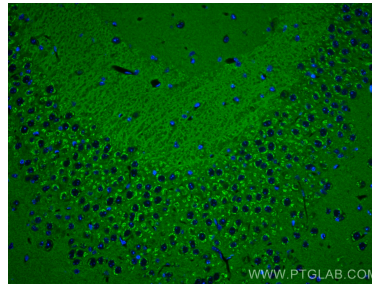
PC-12 cells were subjected to SDS PAGE followed by western blot with 68061-1-Ig (NSF antibody) at dilution of 1:10000 incubated at room temperature for 1.5 hours.



WB result of NSF antibody (68061-1-Ig; 1:60000; incubated at room temperature for 1.5 hours) with sh-Control and sh-NSF transfected HEK-293 cells.



SH-SY5Y cells were subjected to SDS PAGE followed by western blot with 68061-1-Ig (NSF antibody) at dilution of 1:10000 incubated at room temperature for 1.5 hours.



Immunofluorescent analysis of (4% PFA) fixed mouse brain tissue using NSF antibody (68061-1-Ig, Clone: 2B6H6 ) at dilution of 1:600 and CoraLite®488-Conjugated AffiniPure Goat Anti-Mouse IgG(H+L).