

For Research Use Only

GEN1 Monoclonal antibody

Catalog Number: 68060-1-Ig



Basic Information

Catalog Number:

68060-1-Ig

Size:

1000 µg/ml

Source:

Mouse

Isotype:

IgG1

Immunogen Catalog Number:

AG31247

GenBank Accession Number:

NM_182625

GeneID (NCBI):

348654

UNIPROT ID:

Q17RS7

Full Name:

Gen homolog 1, endonuclease
(Drosophila)

Calculated MW:

103 kDa

Observed MW:

98-100 kDa

Purification Method:

Protein G purification

CloneNo.:

1A10D10

Recommended Dilutions:

WB 1:1000-1:4000

Applications

Tested Applications:

WB, ELISA

Species Specificity:

Human

Positive Controls:

WB : HEK-293 cells, U2OS cells, A549 cells, K-562 cells,
Daudi cells

Background Information

GEN1 is an endonuclease which resolves Holliday junctions (HJs) by the introduction of symmetrically related cuts across the junction point, to produce nicked duplex products in which the nicks can be readily ligated. GEN1 efficiently cleaves both single and double HJs contained within large recombination intermediates.

Storage

Storage:

Store at -20°C.

Storage Buffer:

PBS with 0.02% sodium azide and 50% glycerol pH 7.3.

Aliquoting is unnecessary for -20°C storage

For technical support and original validation data for this product please contact:

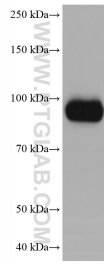
T: 4006900926

E: Proteintech-CN@ptglab.com

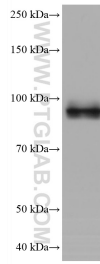
W: ptgcn.com

This product is exclusively available under Proteintech Group brand and is not available to purchase from any other manufacturer.

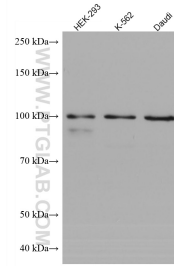
Selected Validation Data



U2OS cells were subjected to SDS PAGE followed by western blot with 68060-1-Ig (GEN1 antibody) at dilution of 1:2000 incubated at room temperature for 1.5 hours.



A549 cells were subjected to SDS PAGE followed by western blot with 68060-1-Ig (GEN1 antibody) at dilution of 1:2000 incubated at room temperature for 1.5 hours.



Various lysates were subjected to SDS PAGE followed by western blot with 68060-1-Ig (GEN1 antibody) at dilution of 1:2000 incubated at room temperature for 1.5 hours.