

HTRA1 Monoclonal antibody

Catalog Number: 68053-1-Ig

Basic Information

Catalog Number:

68053-1-Ig

Size:

1000 µg/ml

Source:

Mouse

Isotype:

IgG2a

Immunogen Catalog Number:

AG31204

GenBank Accession Number:

NM_002775

GeneID (NCBI):

5654

UNIPROT ID:

Q92743

Full Name:

HtrA serine peptidase 1

Calculated MW:

51 kDa

Observed MW:

51 kDa

Purification Method:

Protein A purification

CloneNo.:

1B11G12

Recommended Dilutions:

WB 1:1000-1:6000

Applications

Tested Applications:

WB, FC (Intra), ELISA

Species Specificity:

human, mouse, rat, pig, rabbit

Positive Controls:

WB : hTERT-RPE1 cells, pig brain tissue, HeLa cells, HepG2 cells, L02 cells, rabbit brain tissue, rat brain tissue, mouse brain tissue

Background Information

HTRA1, also named as HTRA, PRSS11 and L56, belongs to the peptidase S1B family. It is a protease that regulates the availability of insulin-like growth factors (IGFs) by cleaving IGF-binding proteins. HTRA1 represses signaling by TGF- β family members. Variations in the promoter region of HTRA1 are the cause of susceptibility to age-related macular degeneration type 7 (ARMD7). Defects in HTRA1 are the cause of cerebral autosomal recessive arteriopathy with subcortical infarcts and leukoencephalopathy (CARASIL). The 50 kDa HTRA1 was found at varying levels in the majority samples tested, whereas the 42 kDa form of HTRA1 was identified in degenerated intervertebral disc protein samples (PMID:22556410). The short truncated monomer 37 kDa and dimer 74 kDa are proved (PMID:25329061). The antibody is specific to HTRA1.

Storage

Storage:

Store at -20°C. Stable for one year after shipment.

Storage Buffer:

PBS with 0.02% sodium azide and 50% glycerol pH 7.3.

Aliquoting is unnecessary for -20°C storage

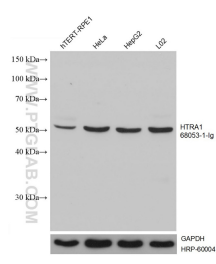
For technical support and original validation data for this product please contact:

T: 4006900926

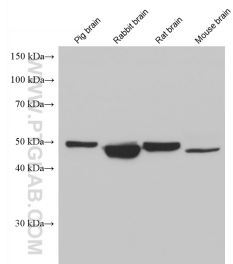
E: Proteintech-CN@ptglab.comW: ptgcn.com

This product is exclusively available under Proteintech Group brand and is not available to purchase from any other manufacturer.

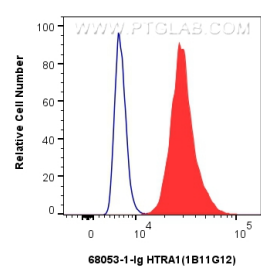
Selected Validation Data



Various lysates were subjected to SDS PAGE followed by western blot with 68053-1-Ig (HTRA1 antibody) at dilution of 1:3000 incubated at room temperature for 1.5 hours. The membrane was stripped and reblotted with HRP-conjugated GAPDH Monoclonal antibody (HRP-60004) as loading control.



Various lysates were subjected to SDS PAGE followed by western blot with 68053-1-Ig (HTRA1 antibody) at dilution of 1:3000 incubated at room temperature for 1.5 hours.



1x10⁶ HeLa cells were intracellularly stained with 0.4 ug HTRA1 Monoclonal antibody (68053-1-Ig, Clone:1B11G12) and CoraLite488-conjugated Donkey Anti-Mouse IgG(H+L)(SA00013-5)(red), or 0.4 ug Mouse IgG2a Isotype Control (C1.18.4) (65208-1-Ig, Clone: C1.18.4) (blue). Cells were fixed with 4% PFA and permeabilized with Flow Cytometry Perm Buffer (PF00011-C).