

GAS2L1 Monoclonal antibody, PBS Only

Catalog Number: 68051-1-PBS

Basic Information

Catalog Number: 68051-1-PBS	GenBank Accession Number: BC011047	Purification Method: Protein G purification
Size: 1 mg/ml	GeneID (NCBI): 10634	CloneNo.: 2C6D5
Source: Mouse	UNIPROT ID: Q99501	
Isotype: IgG1	Full Name: growth arrest-specific 2 like 1	
Immunogen Catalog Number: AG31232	Calculated MW: 73 kDa	
	Observed MW: 73 kDa	

Applications

Tested Applications:
WB, Indirect ELISA, IHC

Species Specificity:
Human, Mouse

Background Information

GAS2L1 (growth arrest - specific 2 - like 1) is a component of the cytoskeleton that mediates the interaction between microtubules and microfilament (PMID: 34555082). GAS2L1 contains an N - terminal actin - binding calponin homology (CH) domain, a MT lattice - binding Gas2 - related (GAR) domain and a C - terminal SxIP motif, which mediates the interaction with MT plus ends via EB proteins. GAS2L1 regulates microtubule dynamics and stability by interacting with microtubule plus-end tracking proteins, such as MAPRE1, to regulate microtubule growth along actin stress fibers (PubMed:24706950).

Storage

Storage:
Store at -80°C.
The product is shipped with ice packs. Upon receipt, store it immediately at -80°C

Storage Buffer:
PBS Only

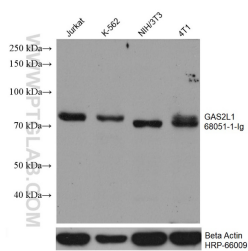
For technical support and original validation data for this product please contact:

T: 4006900926

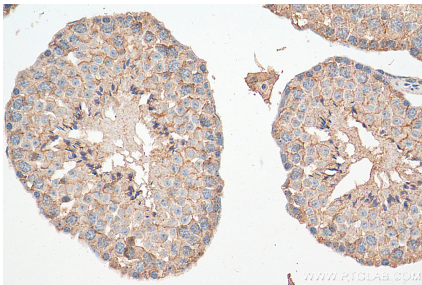
E: Proteintech-CN@ptglab.comW: ptgcn.com

This product is exclusively available under Proteintech Group brand and is not available to purchase from any other manufacturer.

Selected Validation Data



Jurkat cells were subjected to SDS PAGE followed by western blot with 68051-1-Ig (GAS2L1 antibody) at dilution of 1:2000 incubated at room temperature for 1.5 hours. The membrane was stripped and reblotted with HRP-conjugated Beta Actin Monoclonal antibody (HRP-66009) as loading control. This data was developed using the same antibody clone with 68051-1-PBS in a different storage buffer formulation.



Immunohistochemical analysis of paraffin-embedded mouse testis tissue slide using 68051-1-Ig (GAS2L1 antibody) at dilution of 1:200 (under 40x lens). Heat mediated antigen retrieval with Tris-EDTA buffer (pH 9.0). This data was developed using the same antibody clone with 68051-1-PBS in a different storage buffer formulation.