

For Research Use Only

# Phospho-RPS6KA1 (Thr359/Ser363) Monoclonal antibody, PBS Only



Catalog Number: 68041-1-PBS

## Basic Information

Catalog Number: 68041-1-PBS	GenBank Accession Number: BC014966	Purification Method: Protein G purification
Size: 1 mg/ml	GeneID (NCBI): 6195	CloneNo.: 2C11D9
Source: Mouse	UNIPROT ID: Q15418	
Isotype: IgG1	Full Name: ribosomal protein S6 kinase, 90kDa, polypeptide 1	
	Calculated MW: 735 aa, 83 kDa	
	Observed MW: 80 kDa	

## Applications

Tested Applications:  
WB, Indirect ELISA, IF

Species Specificity:  
Human, Mouse

## Background Information

The 90 kDa ribosomal S6 kinases (RSK1-4) are a family of widely expressed serine/threonine kinases and play an important role in the MAPK signaling cascade and act downstream of ERK1/2 signaling. It can mediate mitogenic and stress-induced activation of the transcription factors CREB1, ETV1/ER81 and NR4A1/NUR77. RSK1 (RPS6KA1) is also designated as p90RSK associated with cellular proliferation, survival and differentiation. RPS6KA1 has some phosphorylation sites including Ser380, Thr359 and Ser363 which are important for kinase activation. (PMID: 16458888, 30813401, 17259979, 10679322)

## Storage

Storage:  
Store at -80°C.  
**The product is shipped with ice packs. Upon receipt, store it immediately at -80°C**

Storage Buffer:  
PBS Only

For technical support and original validation data for this product please contact:

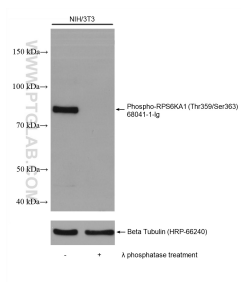
T: 4006900926

E: [Proteintech-CN@ptglab.com](mailto:Proteintech-CN@ptglab.com)

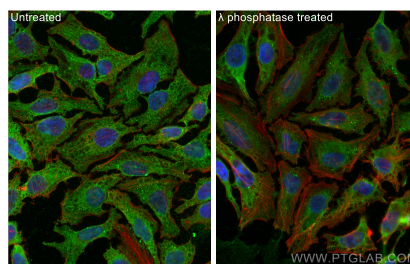
W: [ptgcn.com](http://ptgcn.com)

**This product is exclusively available under Proteintech Group brand and is not available to purchase from any other manufacturer.**

## Selected Validation Data



Non-treated and  $\lambda$  phosphatase treated NIH/3T3 cells were subjected to SDS PAGE followed by western blot with 68041-1-Ig (Phospho-RPS6KA1 (Thr359/Ser363) antibody) at dilution of 1:20000 incubated at room temperature for 1.5 hours. The membrane was stripped and re-blotted with Beta-Tubulin (HRP-66240) as loading control. This data was developed using the same antibody clone with 68041-1-PBS in a different storage buffer formulation.



Immunofluorescent analysis of (4% PFA) fixed  $\lambda$  phosphatase treated HeLa cells using Phospho-RPS6KA1 (Thr359/Ser363) antibody (68041-1-Ig, Clone: 2C11D9 ) at dilution of 1:400 and CoraLite®488-Conjugated AffiniPure Goat Anti-Mouse IgG(H+L), CL594-Phalloidin (red). This data was developed using the same antibody clone with 68041-1-PBS in a different storage buffer formulation.