

For Research Use Only

# SMS Monoclonal antibody, PBS Only

Catalog Number: 68040-1-PBS

Featured Product



## Basic Information

Catalog Number:

68040-1-PBS

Concentration:

1mg/ml

Source:

Mouse

Isotype:

IgG1

Immunogen Catalog Number:

AG8840

GenBank Accession Number:

BC009898

GeneID (NCBI):

6611

UNIPROT ID:

P52788

Full Name:

spermine synthase

Calculated MW:

366 aa, 41 kDa

Observed MW:

41 kDa

Purification Method:

Protein A purification

CloneNo.:

1G8E9

## Applications

Tested Applications:

WB, IF/ICC, FC (Intra), ELISA

Species Specificity:

human

## Background Information

### Storage

Storage:

Store at -80°C.

The product is shipped with ice packs. Upon receipt, store it immediately at -80°C

Storage Buffer:

PBS Only

For technical support and original validation data for this product please contact:

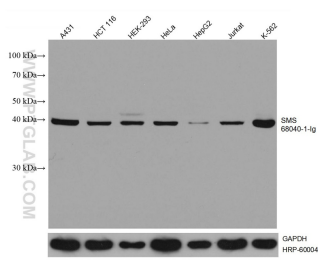
T: 4006900926

E: [Proteintech-CN@ptglab.com](mailto:Proteintech-CN@ptglab.com)

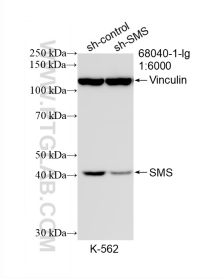
W: [ptgcn.com](http://ptgcn.com)

This product is exclusively available under Proteintech Group brand and is not available to purchase from any other manufacturer.

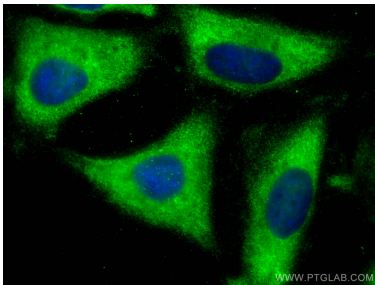
Selected Validation Data



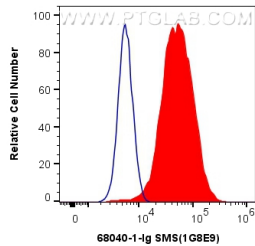
A431 cells were subjected to SDS PAGE followed by western blot with 68040-1-Ig (SMS antibody) at dilution of 1:10000 incubated at room temperature for 1.5 hours. The membrane was stripped and reblotted with HRP-conjugated GAPDH Monoclonal antibody (HRP-60004) as loading control. This data was developed using the same antibody clone with 68040-1-PBS in a different storage buffer formulation.



WB result of SMS antibody (68040-1-Ig; 1:6000; incubated at room temperature for 1.5 hours) with sh-Control and sh-SMS transfected K-562 cells. This data was developed using the same antibody clone with 68040-1-PBS in a different storage buffer formulation.



Immunofluorescent analysis of (-20°C Ethanol) fixed HeLa cells using SMS antibody (68040-1-Ig, Clone: 1G8E9 ) at dilution of 1:800 and CoraLite®488-Conjugated AffiniPure Goat Anti-Mouse IgG(H+L). This data was developed using the same antibody clone with 68040-1-PBS in a different storage buffer formulation.



1X10<sup>6</sup> HeLa cells were intracellularly stained with 0.4 ug Anti-Human SMS (68040-1-Ig, Clone:1G8E9) and CoraLite®488-Conjugated AffiniPure Goat Anti-Mouse IgG(H+L) at dilution 1:1000 (red), or 0.4 ug Mouse IgG1 Isotype Control (MOPC-21) (65124-1-Ig, Clone: MOPC-21) (blue). Cells were fixed with 4% PFA and permeabilized with Flow Cytometry Perm Buffer (PF00011-C). This data was developed using the same antibody clone with 68040-1-PBS in a

