

For Research Use Only

# ZFP36L1 Monoclonal antibody, PBS Only



Catalog Number: 68038-1-PBS

## Basic Information

Catalog Number: 68038-1-PBS	GenBank Accession Number: BC018340	Purification Method: Protein A purification
Size: 1 mg/ml	GeneID (NCBI): 677	CloneNo.: 1H6G6
Source: Mouse	UNIPROT ID: Q07352	
Isotype: IgG2b	Full Name: zinc finger protein 36, C3H type-like 1	
Immunogen Catalog Number: AG30469	Calculated MW: 338 aa, 36 kDa	
	Observed MW: 36 kDa	

## Applications

Tested Applications:  
WB, Indirect ELISA, IF

Species Specificity:  
Human, Rat

## Background Information

As a member of the Tristetraprolin (TTP) RNA binding protein family, ZFP36L1 regulate gene expression post-transcriptionally by promoting mRNA decay. In mammals, ZFP36L1 and its family members have been shown to regulate development, cell differentiation, cell cycle, apoptosis and anti-cancer capability by targeting an extensive overlapping repertoire of mRNAs.

## Storage

Storage:  
Store at -80°C.  
**The product is shipped with ice packs. Upon receipt, store it immediately at -80°C**

Storage Buffer:  
PBS Only

For technical support and original validation data for this product please contact:

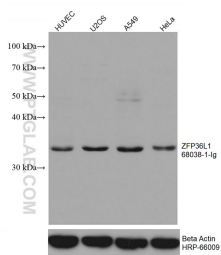
T: 4006900926

E: [Proteintech-CN@ptglab.com](mailto:Proteintech-CN@ptglab.com)

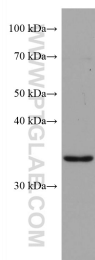
W: [ptgcn.com](http://ptgcn.com)

**This product is exclusively available under Proteintech Group brand and is not available to purchase from any other manufacturer.**

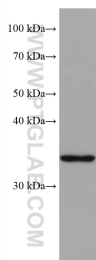
## Selected Validation Data



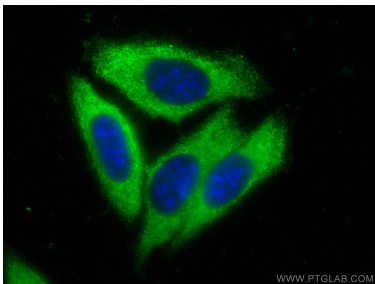
Various lysates were subjected to SDS PAGE followed by western blot with 68038-1-Ig (ZFP36L1 antibody) at dilution of 1:3000 incubated at room temperature for 1.5 hours. The membrane was stripped and reblotted with HRP-conjugated Beta Actin Monoclonal antibody (HRP-66009) as loading control. This data was developed using the same antibody clone with 68038-1-PBS in a different storage buffer formulation.



HSC-T6 cells were subjected to SDS PAGE followed by western blot with 68038-1-Ig (ZFP36L1 antibody) at dilution of 1:3000 incubated at room temperature for 1.5 hours. This data was developed using the same antibody clone with 68038-1-PBS in a different storage buffer formulation.



PC-12 cells were subjected to SDS PAGE followed by western blot with 68038-1-Ig (ZFP36L1 antibody) at dilution of 1:3000 incubated at room temperature for 1.5 hours. This data was developed using the same antibody clone with 68038-1-PBS in a different storage buffer formulation.



Immunofluorescent analysis of (-20°C Ethanol) fixed HepG2 cells using ZFP36L1 antibody (68038-1-Ig, Clone: 1H6G6) at dilution of 1:400 and CoraLite®488-Conjugated AffiniPure Goat Anti-Mouse IgG(H+L). This data was developed using the same antibody clone with 68038-1-PBS in a different storage buffer formulation.