

ZFP36L1 Monoclonal antibody

Catalog Number: 68038-1-Ig

Basic Information

Catalog Number:

68038-1-Ig

Size:

1000 µg/ml

Source:

Mouse

Isotype:

IgG2b

Immunogen Catalog Number:

AG30469

GenBank Accession Number:

BC018340

GeneID (NCBI):

677

UNIPROT ID:

Q07352

Full Name:

zinc finger protein 36, C3H type-like 1

Calculated MW:

338 aa, 36 kDa

Observed MW:

36 kDa

Purification Method:

Protein A purification

CloneNo.:

1H6G6

Recommended Dilutions:

WB 1:1000-1:6000

IF/ICC 1:200-1:800

Applications

Tested Applications:

IF/ICC, WB, ELISA

Species Specificity:

Human, Rat

Positive Controls:

WB : HUVEC cells, HSC-T6 cells, PC-12 cells, U2OS cells, A549 cells, HeLa cells

IF/ICC : HepG2 cells,

Background Information

As a member of the Tristetraprolin (TTP) RNA binding protein family, ZFP36L1 regulate gene expression post-transcriptionally by promoting mRNA decay. In mammals, ZFP36L1 and its family members have been shown to regulate development, cell differentiation, cell cycle, apoptosis and anti-cancer capability by targeting an extensive overlapping repertoire of mRNAs.

Storage

Storage:

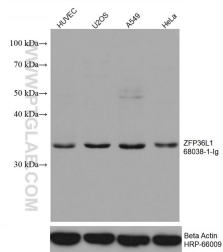
Store at -20°C. Stable for one year after shipment.

Storage Buffer:

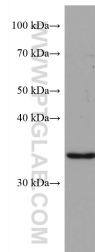
PBS with 0.02% sodium azide and 50% glycerol pH 7.3.

Aliquoting is unnecessary for -20°C storage

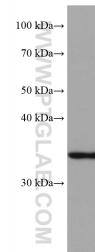
Selected Validation Data



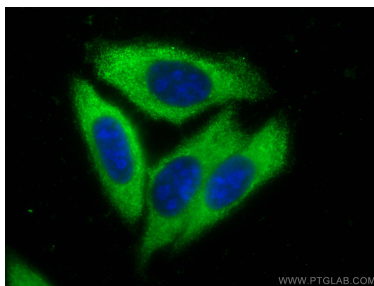
Various lysates were subjected to SDS PAGE followed by western blot with 68038-1-Ig (ZFP36L1 antibody) at dilution of 1:3000 incubated at room temperature for 1.5 hours. The membrane was stripped and reblotted with HRP-conjugated Beta Actin Monoclonal antibody (HRP-66009) as loading control.



HSC-T6 cells were subjected to SDS PAGE followed by western blot with 68038-1-Ig (ZFP36L1 antibody) at dilution of 1:3000 incubated at room temperature for 1.5 hours.



PC-12 cells were subjected to SDS PAGE followed by western blot with 68038-1-Ig (ZFP36L1 antibody) at dilution of 1:3000 incubated at room temperature for 1.5 hours.



Immunofluorescent analysis of (-20°C Ethanol) fixed HepG2 cells using ZFP36L1 antibody (68038-1-Ig, Clone: 1H6G6) at dilution of 1:400 and CoraLite®488-Conjugated AffiniPure Goat Anti-Mouse IgG(H+L).