

# CD35 Monoclonal antibody

Catalog Number: 68033-1-Ig

## Basic Information

<b>Catalog Number:</b> 68033-1-Ig	<b>GenBank Accession Number:</b> NM_000573	<b>Purification Method:</b> Protein A purification
<b>Size:</b> 1000 ug/ml	<b>GeneID (NCBI):</b> 1378	<b>CloneNo.:</b> 1B8E6
<b>Source:</b> Mouse	<b>ENSEMBL Gene ID:</b> ENSG00000203710	<b>Recommended Dilutions:</b> IHC 1:550-1:2200 IF-P 1:200-1:800
<b>Isotype:</b> IgG1	<b>UNIPROT ID:</b> P17927	
<b>Immunogen Catalog Number:</b> AG30268	<b>Full Name:</b> complement component (3b/4b) receptor 1 (Knops blood group)	
	<b>Calculated MW:</b> 224 kDa	

## Applications

<b>Tested Applications:</b> IHC, IF-P, ELISA	<b>Positive Controls:</b>
<b>Species Specificity:</b> human	IHC : human tonsillitis tissue, IF-P : human appendicitis tissue,
<b>Note-IHC: suggested antigen retrieval with TE buffer pH 9.0; (*) Alternatively, antigen retrieval may be performed with citrate buffer pH 6.0</b>	

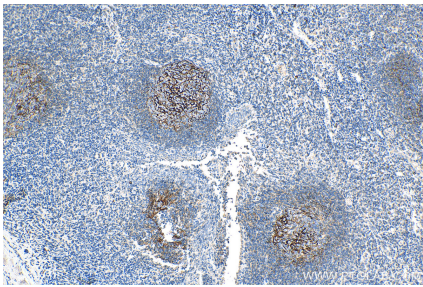
## Background Information

CD35, also known as complement receptor type 1 (CR1) or C3b/C4b receptor, is a single-chain glycoprotein consisting of 30 repeating homologous protein domains known as short consensus repeats (~60 amino acids each) followed by transmembrane and cytoplasmic domains (PMID: 8765013). CD35 is variably expressed by granulocytes, monocytes, B cells, some T cells, erythrocytes, follicular dendritic cells, Langerhans cells, and glomerular podocytes (PMID: 19004497). CD35 acts as a receptor for C3b and C4b and plays important roles in the regulation of the complement cascade and clearance of immune complexes. A soluble form of CD35 has been found in plasma (PMID: 3156931). It has been reported that soluble CD35 is produced by a proteolytic cleavage in the C-terminal region of CD35 transmembrane domain (PMID: 9405292).

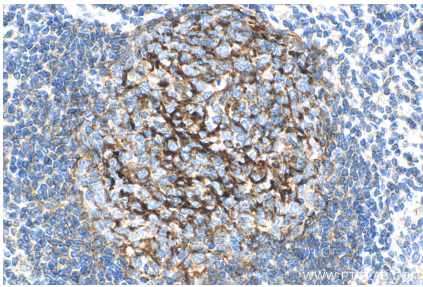
## Storage

**Storage:**  
Store at -20°C. Stable for one year after shipment.  
**Storage Buffer:**  
PBS with 0.02% sodium azide and 50% glycerol pH 7.3.  
Aliquoting is unnecessary for -20°C storage

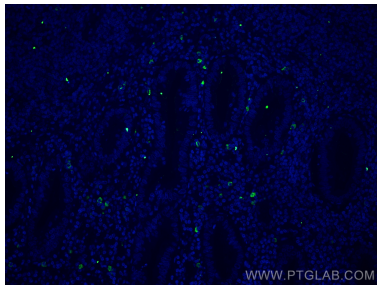
Selected Validation Data



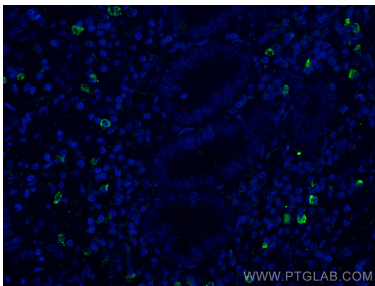
Immunohistochemical analysis of paraffin-embedded human tonsillitis tissue slide using 68033-1-Ig (CD35 antibody) at dilution of 1:1100 (under 10x lens). Heat mediated antigen retrieval with Tris-EDTA buffer (pH 9.0).



Immunohistochemical analysis of paraffin-embedded human tonsillitis tissue slide using 68033-1-Ig (CD35 antibody) at dilution of 1:1100 (under 40x lens). Heat mediated antigen retrieval with Tris-EDTA buffer (pH 9.0).



Immunofluorescent analysis of (4% PFA) fixed human appendicitis tissue using CD35 antibody (68033-1-Ig, Clone: 1B8E6) at dilution of 1:400 and CoraLite®488-Conjugated AffiniPure Goat Anti-Mouse IgG(H+L).



Immunofluorescent analysis of (4% PFA) fixed human appendicitis tissue using CR1 antibody (68033-1-Ig, Clone: 1B8E6) at dilution of 1:400 and CoraLite®488-Conjugated AffiniPure Goat Anti-Mouse IgG(H+L).



Immunohistochemical analysis of paraffin-embedded human tonsillitis tissue slide using 68033-1-Ig (CD35 antibody) at dilution of 1:3000 (under 10x lens). Heat mediated antigen retrieval with Tris-EDTA buffer (pH 9.0).