

# CRMP1 Monoclonal antibody, PBS Only

Catalog Number: 68021-1-PBS

## Basic Information

Catalog Number:	68021-1-PBS	GenBank Accession Number:	BC000252	Purification Method:	Protein A purification
Size:	1 mg/ml	GeneID (NCBI):	1400	CloneNo.:	2F4G5
Source:	Mouse	UNIPROT ID:	Q14194		
Isotype:	IgG2a	Full Name:	collapsin response mediator protein 1		
Immunogen Catalog Number:	AG30090	Calculated MW:	62 kDa		
		Observed MW:	62 kDa		

## Applications

**Tested Applications:**  
WB, Indirect ELISA, IHC

**Species Specificity:**  
Mouse, Rat, Rabbit, Pig, Chicken, Human

## Background Information

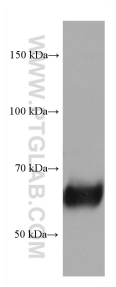
CRMP1 (Collapsin response mediator protein 1) is also named as DPYSL1, ULIP3, DRP-1 and belongs to the collapsin response mediator protein family, which are a family of five cytoplasmic proteins predominantly expressed in the developing nervous system. CRMP1, the predicted 62 kDa protein and its 74 kDa isoform corresponding to its N-terminal splice variant already described for embryonic, neonatal, and adult brain of the rat are evidenced in the cortex of adult mouse (PMID:15834957). This protein is involved in invasion, and aggressiveness of prolactin pituitary tumors.

## Storage

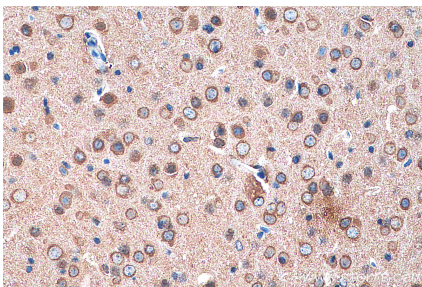
**Storage:**  
Store at -80°C.  
**The product is shipped with ice packs. Upon receipt, store it immediately at -80°C**

**Storage Buffer:**  
PBS Only

## Selected Validation Data



mouse cerebellum tissue were subjected to SDS PAGE followed by western blot with 68021-1-Ig (CRMP1 antibody) at dilution of 1:25000 incubated at room temperature for 1.5 hours. This data was developed using the same antibody clone with 68021-1-PBS in a different storage buffer formulation.



Immunohistochemical analysis of paraffin-embedded mouse brain tissue slide using 68021-1-Ig (CRMP1 antibody) at dilution of 1:10000 (under 40x lens). Heat mediated antigen retrieval with Tris-EDTA buffer (pH 9.0). This data was developed using the same antibody clone with 68021-1-PBS in a different storage buffer formulation.