

For Research Use Only

# AGT Monoclonal antibody

Catalog Number: 68020-1-Ig



## Basic Information

<b>Catalog Number:</b> 68020-1-Ig	<b>GenBank Accession Number:</b> BC011519	<b>Purification Method:</b> Protein A purification
<b>Size:</b> 500 µg/ml	<b>GeneID (NCBI):</b> 183	<b>CloneNo.:</b> 1B2F5
<b>Source:</b> Mouse	<b>UNIPROT ID:</b> P01019	<b>Recommended Dilutions:</b> WB 1:5000-1:20000 IHC 1:500-1:2000 IF 1:200-1:800
<b>Isotype:</b> IgG2b	<b>Full Name:</b> angiotensinogen (serpin peptidase inhibitor, clade A, member 8)	
<b>Immunogen Catalog Number:</b> AG16658	<b>Calculated MW:</b> 485 aa, 53 kDa	
	<b>Observed MW:</b> 52 kDa	

## Applications

**Tested Applications:**  
IF/ICC, IHC, WB, ELISA

**Species Specificity:**  
Human, pig

**Note-IHC: suggested antigen retrieval with TE buffer pH 9.0; (\*) Alternatively, antigen retrieval may be performed with citrate buffer pH 6.0**

**Positive Controls:**

**WB:** human plasma, HuH-7 cells, THP-1 cells, human placenta tissue, pig plasma

**IHC:** human kidney tissue, human liver tissue

**IF:** HepG2 cells,

## Background Information

Angiotensinogen is a precursor of angiotensin II (Ang II), is expressed and synthesized largely in the liver and is cleaved by the enzyme renin in response to lowered blood pressure. It has a key role in mediating vascular constriction and regulating salt and fluid homeostasis. The resulting product, angiotensin I, is then cleaved by angiotensin converting enzyme (ACE) to generate the physiologically active enzyme angiotensin II. Mutations in this gene are associated with susceptibility to essential hypertension, and can cause renal tubular dysgenesis, a severe disorder of renal tubular development. Defects in this gene also have been associated with non-familial structural atrial fibrillation, and inflammatory bowel disease.

## Storage

**Storage:**  
Store at -20°C.  
**Storage Buffer:**  
PBS with 0.02% sodium azide and 50% glycerol pH 7.3.  
Aliquoting is unnecessary for -20°C storage

For technical support and original validation data for this product please contact:

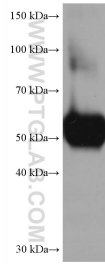
T: 4006900926

E: [Proteintech-CN@ptglab.com](mailto:Proteintech-CN@ptglab.com)

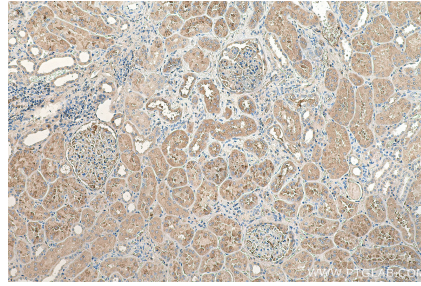
W: [ptgcn.com](http://ptgcn.com)

**This product is exclusively available under Proteintech Group brand and is not available to purchase from any other manufacturer.**

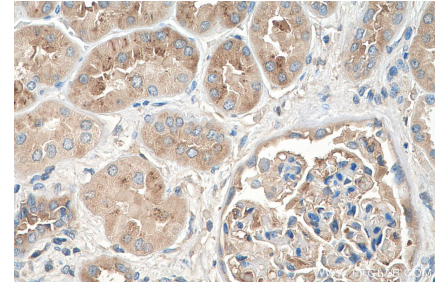
## Selected Validation Data



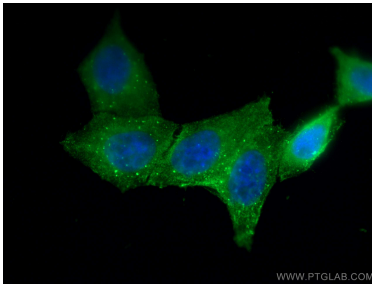
human plasma were subjected to SDS PAGE followed by western blot with 68020-1-Ig (AGT antibody) at dilution of 1:10000 incubated at room temperature for 1.5 hours.



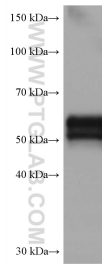
Immunohistochemical analysis of paraffin-embedded human kidney tissue slide using 68020-1-Ig (AGT antibody) at dilution of 1:1000 (under 10x lens). Heat mediated antigen retrieval with Tris-EDTA buffer (pH 9.0).



Immunohistochemical analysis of paraffin-embedded human kidney tissue slide using 68020-1-Ig (AGT antibody) at dilution of 1:1000 (under 40x lens). Heat mediated antigen retrieval with Tris-EDTA buffer (pH 9.0).



Immunofluorescent analysis of (4% PFA) fixed HepG2 cells using AGT antibody (68020-1-Ig, Clone: 1B2F5) at dilution of 1:400 and CoraLite®488-Conjugated AffiniPure Goat Anti-Mouse IgG(H+L).



human placenta tissue were subjected to SDS PAGE followed by western blot with 68020-1-Ig (AGT antibody) at dilution of 1:10000 incubated at room temperature for 1.5 hours.