

RPA2 Monoclonal antibody, PBS Only

Catalog Number: 67999-1-PBS

Basic Information

Catalog Number:

67999-1-PBS

Size:

1 mg/ml

Source:

Mouse

Isotype:

IgG1

Immunogen Catalog Number:

AG24783

GenBank Accession Number:

BC001630

GeneID (NCBI):

6118

UNIPROT ID:

P15927

Full Name:

replication protein A2, 32kDa

Calculated MW:

29 kDa

Observed MW:

30 kDa

Purification Method:

Protein G purification

CloneNo.:

1B9H11

Applications

Tested Applications:

WB, Indirect ELISA, IF

Species Specificity:

Human, Mouse, Rat, Pig, rabbit

Background Information

RPA2, a subunit of the heterotrimeric replication protein A (RPA) complex, is overexpressed in various cancers. RPA2 is a major target for upstream kinases, including CDKs and the three PIKKs (ATR, ataxia-telangiectasia mutated [ATM], and DNA-PK). RPA2 comprises multiple critical Ser/Thr residues that are phosphorylated in sequential order in response to genotoxic stress.

Storage

Storage:

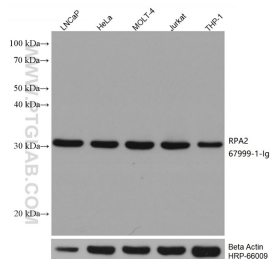
Store at -80°C.

The product is shipped with ice packs. Upon receipt, store it immediately at -80°C

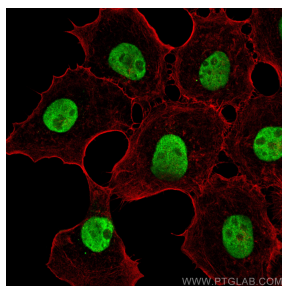
Storage Buffer:

PBS Only

Selected Validation Data



Various lysates were subjected to SDS PAGE followed by western blot with 67999-1-Ig (RPA2 antibody) at dilution of 1:20000 incubated at room temperature for 1.5 hours. The membrane was stripped and reblotted with HRP-conjugated Beta Actin Monoclonal antibody (HRP-66009) as loading control. This data was developed using the same antibody clone with 67999-1-PBS in a different storage buffer formulation.



Immunofluorescent analysis of (4% PFA) fixed A431 cells using RPA2 antibody (67999-1-Ig, Clone: 1B9H11) at dilution of 1:4000 and CoraLite®488-Conjugated AffiniPure Goat Anti-Mouse IgG(H+L), (CL594-Phalloidin, red). This data was developed using the same antibody clone with 67999-1-PBS in a different storage buffer formulation.