

RPA2 Monoclonal antibody

Catalog Number: 67999-1-Ig

Basic Information

Catalog Number:

67999-1-Ig

Size:

1000 µg/ml

Source:

Mouse

Isotype:

IgG1

Immunogen Catalog Number:

AG24783

GenBank Accession Number:

BC001630

GeneID (NCBI):

6118

UNIPROT ID:

P15927

Full Name:

replication protein A2, 32kDa

Calculated MW:

29 kDa

Observed MW:

30 kDa

Purification Method:

Protein G purification

CloneNo.:

1B9H11

Recommended Dilutions:

WB 1:5000-1:50000

IF/ICC 1:2000-1:8000

Applications

Tested Applications:

IF/ICC, WB, ELISA

Species Specificity:

Human, Mouse, Rat, Pig, rabbit

Positive Controls:

WB : LNCaP cells, pig spleen tissue, rat testis tissue, mouse testis tissue, rabbit spleen tissue, Hela cells, MOLT-4 cells, Jurkat cells, THP-1 cells

IF/ICC : A431 cells,

Background Information

RPA2, a subunit of the heterotrimeric replication protein A (RPA) complex, is overexpressed in various cancers. RPA2 is a major target for upstream kinases, including CDKs and the three PIKKs (ATR, ataxia-telangiectasia mutated [ATM], and DNA-PK). RPA2 comprises multiple critical Ser/Thr residues that are phosphorylated in sequential order in response to genotoxic stress.

Storage

Storage:

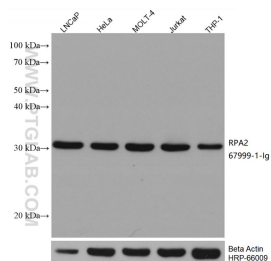
Store at -20°C. Stable for one year after shipment.

Storage Buffer:

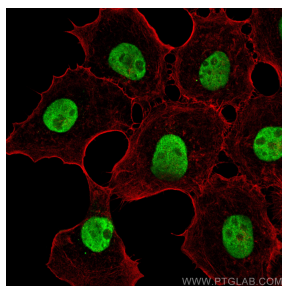
PBS with 0.02% sodium azide and 50% glycerol pH 7.3.

Aliquoting is unnecessary for -20°C storage

Selected Validation Data



Various lysates were subjected to SDS PAGE followed by western blot with 67999-1-Ig (RPA2 antibody) at dilution of 1:20000 incubated at room temperature for 1.5 hours. The membrane was stripped and reblotted with HRP-conjugated Beta Actin Monoclonal antibody (HRP-66009) as loading control.



Immunofluorescent analysis of (4% PFA) fixed A431 cells using RPA2 antibody (67999-1-Ig, Clone: 1B9H11) at dilution of 1:4000 and CoraLite®488-Conjugated AffiniPure Goat Anti-Mouse IgG(H+L), (CL594-Phalloidin, red).