

## SLC30A2 Monoclonal antibody

Catalog Number: 67993-1-Ig **1 Publications**

## Basic Information

<b>Catalog Number:</b> 67993-1-Ig	<b>GenBank Accession Number:</b> BC006251	<b>Purification Method:</b> Protein G purification
<b>Size:</b> 1000 µg/ml	<b>GeneID (NCBI):</b> 7780	<b>CloneNo.:</b> 1D9E5
<b>Source:</b> Mouse	<b>UNIPROT ID:</b> Q9BRI3	<b>Recommended Dilutions:</b> WB 1:2000-1:12000 IHC 1:300-1:1200
<b>Isotype:</b> IgG1	<b>Full Name:</b> solute carrier family 30 (zinc transporter), member 2	
<b>Immunogen Catalog Number:</b> AG8232	<b>Calculated MW:</b> 323 aa, 35 kDa	
	<b>Observed MW:</b> 41 kDa	

## Applications

<b>Tested Applications:</b> WB, IHC, ELISA	<b>Positive Controls:</b>
<b>Cited Applications:</b> WB	<b>WB :</b> MCF-7 cells, HaCaT cells, Caco-2 cells, HT-29 cells, HeLa cells, NCCIT cells, JAR cells, ATDC-5 cells
<b>Species Specificity:</b> Human, Mouse	<b>IHC :</b> human pancreas cancer tissue,
<b>Cited Species:</b> human, mouse	

**Note-IHC: suggested antigen retrieval with TE buffer pH 9.0; (\*) Alternatively, antigen retrieval may be performed with citrate buffer pH 6.0**

## Background Information

SLC30A2, also named as the Zn transporter 2 gene (ZnT2), belongs to the cation diffusion facilitator (CDF) transporter (TC 2.A.4) family and SLC30A subfamily. It plays a role in the zinc ion transmembrane transport. Expression of SLC30A2 is restricted to secretory cells, such as acinar pancreatic cells, prostate epithelial cells, placental trophoblasts, Paneth cells, and mammary epithelial cells (MECs). SLC30A2 consists of six transmembrane domains with cytoplasmic N- and C-termini that contain numerous regulatory domains, and functions as a homo- or hetero- dimer to transport Zn into vesicles (PMID: 29476070). SLC30A2 has 2 isoforms with the molecular mass of 35 and 41 kDa.

## Notable Publications

Author	Pubmed ID	Journal	Application
Guanghui Hou	39514658	Sci Adv	WB

## Storage

**Storage:**  
Store at -20°C.  
**Storage Buffer:**  
 PBS with 0.02% sodium azide and 50% glycerol pH 7.3.  
 Aliquoting is unnecessary for -20°C storage

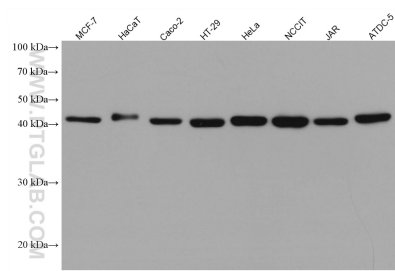
For technical support and original validation data for this product please contact:

T: 4006900926

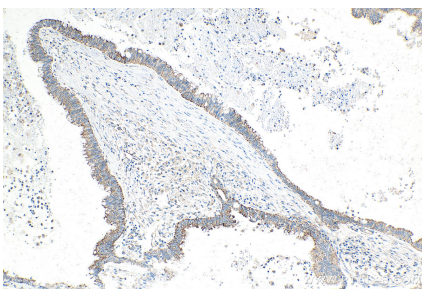
E: [Proteintech-CN@ptglab.com](mailto:Proteintech-CN@ptglab.com)W: [ptgcn.com](http://ptgcn.com)

**This product is exclusively available under Proteintech Group brand and is not available to purchase from any other manufacturer.**

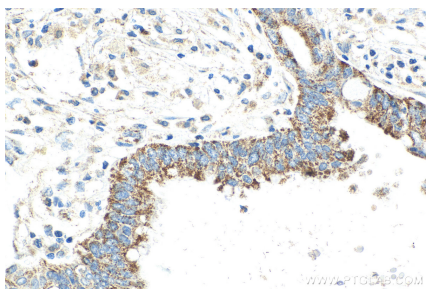
Selected Validation Data



Various lysates were subjected to SDS PAGE followed by western blot with 67993-1-Ig (SLC30A2 antibody) at dilution of 1:6000 incubated at room temperature for 1.5 hours.



Immunohistochemical analysis of paraffin-embedded human pancreas cancer tissue slide using 67993-1-Ig (SLC30A2 antibody) at dilution of 1:600 (under 10x lens). Heat mediated antigen retrieval with Tris-EDTA buffer (pH 9.0).



Immunohistochemical analysis of paraffin-embedded human pancreas cancer tissue slide using 67993-1-Ig (SLC30A2 antibody) at dilution of 1:600 (under 40x lens). Heat mediated antigen retrieval with Tris-EDTA buffer (pH 9.0).