

For Research Use Only

RNASEH2A Monoclonal antibody

Catalog Number: 67976-1-Ig



Basic Information

Catalog Number: 67976-1-Ig	GenBank Accession Number: BC011748	Purification Method: Protein A purification
Size: 1000 µg/ml	GeneID (NCBI): 10535	CloneNo.: 1A2E8
Source: Mouse	UNIPROT ID: O75792	Recommended Dilutions: WB 1:2000-1:10000
Isotype: IgG2a	Full Name: ribonuclease H2, subunit A	
Immunogen Catalog Number: AG9256	Calculated MW: 299 aa, 33 kDa	

Applications

Tested Applications: WB, ELISA	Positive Controls: WB : LNCaP cells, HeLa cells, MCF-7 cells, HEK-293 cells, Jurkat cells, K-562 cells
Species Specificity: Human	

Background Information

RNASEH2A (Ribonuclease H2 subunit A) is also named as RNASEH1, RNH1A and belongs to the RNase HII family and Eukaryotic subfamily. It is involved in the removal of the initiator RNA primers of Okazaki fragments, an essential step during chromosomal DNA replication of the lagging strand (PMID:9482870). It is an endonuclease that specifically degrades the RNA of RNA:DNA hybrids. Defects in RNASEH2A are the cause of Aicardi-Goutieres syndrome type 4 (AGS4).

Storage

Storage:
Store at -20°C.
Storage Buffer:
PBS with 0.02% sodium azide and 50% glycerol pH 7.3.
Aliquoting is unnecessary for -20°C storage

For technical support and original validation data for this product please contact:

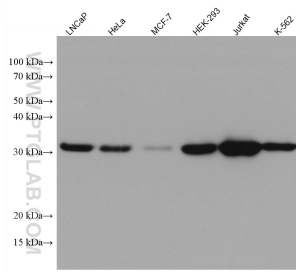
T: 4006900926

E: Proteintech-CN@ptglab.com

W: ptgcn.com

This product is exclusively available under Proteintech Group brand and is not available to purchase from any other manufacturer.

Selected Validation Data



Various lysates were subjected to SDS PAGE followed by western blot with 67976-1-Ig (RNASEH2A antibody) at dilution of 1:5000 incubated at room temperature for 1.5 hours.