

ARHGEF16 Monoclonal antibody

Catalog Number: 67975-1-Ig

Basic Information

Catalog Number:

67975-1-Ig

Size:

1000 ug/ml

Source:

Mouse

Isotype:

IgG2b

Immunogen Catalog Number:

AG28675

GenBank Accession Number:

BC002681

GeneID (NCBI):

27237

UNIPROT ID:

Q5VV41

Full Name:

Rho guanine exchange factor (GEF) 16

Calculated MW:

80 kDa

Observed MW:

80 kDa

Purification Method:

Protein A purification

CloneNo.:

1D8E3

Recommended Dilutions:

WB 1:5000-1:50000

IF/ICC 1:200-1:800

Applications

Tested Applications:

WB, IF/ICC, ELISA

Species Specificity:

human

Positive Controls:

WB : A549 cells, MCF-7 cells, HepG2 cells, HeLa cells, HEK-293 cells

IF/ICC : HeLa cells,

Background Information

Small GTPases of the Rho family are critical regulators of various cellular functions including actin cytoskeleton organization, activation of kinase cascades, mitogenesis, transcriptional activation and stimulation of DNA synthesis. Rho proteins cycle between a biologically active GTP-bound state and an inactive GDP-bound state. Rho guanine nucleotide exchange factor (GEF) has a crucial role in activating small GTPase by exchange GDP for GTP. ARGEF16 is one of the multiple GEF members. Although the specific function of this protein is not known yet, it is thought to be involved in protein-protein and protein-lipid interactions.

Storage

Storage:

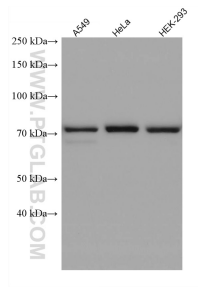
Store at -20°C. Stable for one year after shipment.

Storage Buffer:

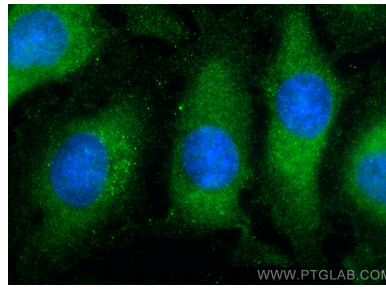
PBS with 0.02% sodium azide and 50% glycerol pH 7.3.

Aliquoting is unnecessary for -20°C storage

Selected Validation Data



Various lysates were subjected to SDS PAGE followed by western blot with 67975-1-Ig (ARHGEF16 antibody) at dilution of 1:10000 incubated at room temperature for 1.5 hours.



Immunofluorescent analysis of (-20°C Ethanol) fixed HeLa cells using ARHGEF16 antibody (67975-1-Ig, Clone: 1D8E3) at dilution of 1:400 and Multi-rAb CoraLite ® Plus 488-Goat Anti-Mouse Recombinant Secondary Antibody (H+L) (RGAM002).