

For Research Use Only

LIMK1 Monoclonal antibody

Catalog Number: 67974-1-Ig

Featured Product

2 Publications



Basic Information

Catalog Number:

67974-1-Ig

Size:

1000 ug/ml

Source:

Mouse

Isotype:

IgG2a

Immunogen Catalog Number:

AG28862

GenBank Accession Number:

BC152982

GeneID (NCBI):

3984

UNIPROT ID:

P53667

Full Name:

LIM domain kinase 1

Calculated MW:

647 aa, 73 kDa

Observed MW:

65 kDa

Purification Method:

Protein A purification

CloneNo.:

2B11E9

Recommended Dilutions:

WB 1:2000-1:10000

IHC 1:1000-1:4000

IF/ICC 1:500-1:2000

Applications

Tested Applications:

WB, IHC, IF/ICC, ELISA

Cited Applications:

WB, IF

Species Specificity:

human, mouse, rat, pig, rabbit

Cited Species:

human, mouse

Note-IHC: suggested antigen retrieval with TE buffer pH 9.0; (*) Alternatively, antigen retrieval may be performed with citrate buffer pH 6.0

Positive Controls:

WB : HeLa cells, MCF-7 cells, SH-SY5Y cells, pig brain tissue, A431 cells, HEK-293 cells, rabbit brain tissue, rat brain tissue, mouse brain tissue

IHC : mouse stomach tissue,

IF/ICC : HeLa cells,

Background Information

LIMK1, also named LIMK, belongs to the protein kinase superfamily and TKL Ser/Thr protein kinase family. LIMK1 is a protein kinase which regulates actin filament dynamics. Phosphorylates and inactivates the actin binding/depolymerizing factor cofilin, thereby stabilizing the actin cytoskeleton. Isoform 3 has a dominant negative effect on actin cytoskeletal changes. LIMK1 may be involved in brain development. The antibody has no cross-reaction with LIMK2.

Notable Publications

Author	Pubmed ID	Journal	Application
Anjing Zhao	39173456	Tissue Cell	WB
Laidong Yu	38747058	Zool Res	WB, IF

Storage

Storage:

Store at -20°C. Stable for one year after shipment.

Storage Buffer:

PBS with 0.02% sodium azide and 50% glycerol pH 7.3.

Aliquoting is unnecessary for -20°C storage

For technical support and original validation data for this product please contact:

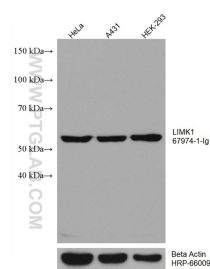
T: 4006900926

E: Proteintech-CN@ptglab.com

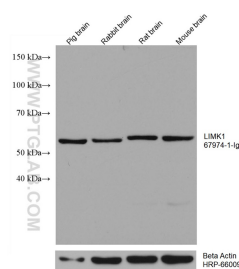
W: ptgcn.com

This product is exclusively available under Proteintech Group brand and is not available to purchase from any other manufacturer.

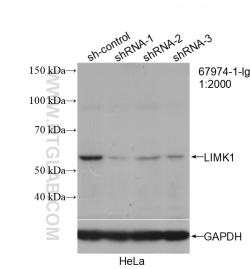
Selected Validation Data



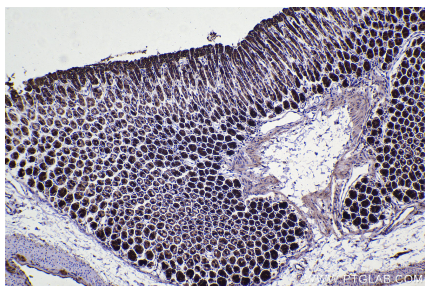
Various lysates were subjected to SDS PAGE followed by western blot with 67974-1-Ig (LIMK1 antibody) at dilution of 1:5000 incubated at room temperature for 1.5 hours. The membrane was stripped and reblotted with HRP-conjugated Beta Actin Monoclonal antibody (HRP-66009) as loading control.



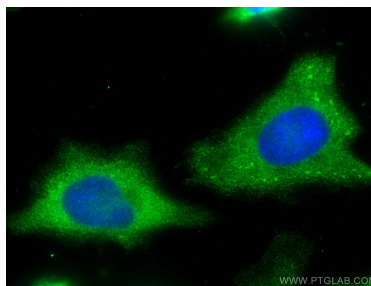
Various lysates were subjected to SDS PAGE followed by western blot with 67974-1-Ig (LIMK1 antibody) at dilution of 1:5000 incubated at room temperature for 1.5 hours. The membrane was stripped and reblotted with HRP-conjugated Beta Actin Monoclonal antibody (HRP-66009) as loading control.



WB result of LIMK1 antibody (67974-1-Ig; 1:2000; incubated at room temperature for 1.5 hours) with sh-Control and sh-LIMK1 transfected HeLa cells.



Immunohistochemical analysis of paraffin-embedded mouse stomach tissue slide using 67974-1-Ig (LIMK1 antibody) at dilution of 1:2000 (under 10x lens). Heat mediated antigen retrieval with Tris-EDTA buffer (pH 9.0).



Immunofluorescent analysis of (-20°C Methanol) fixed HeLa cells using LIMK1 antibody (67974-1-Ig, Clone: 2B11E9) at dilution of 1:1000 and CoraLite® 488-Conjugated AffiniPure Goat Anti-Mouse IgG(H+L).