

MYD88 Monoclonal antibody

Catalog Number: 67969-1-Ig **53 Publications**

Basic Information

Catalog Number:

67969-1-Ig

Concentration:

1000 ug/ml

Source:

Mouse

Isotype:

IgG2b

Immunogen Catalog Number:

AG27659

GenBank Accession Number:

BC013589

GeneID (NCBI):

4615

UNIPROT ID:

Q99836

Full Name:

myeloid differentiation primary response gene (88)

Calculated MW:

33 kDa

Observed MW:

33 kDa

Purification Method:

Protein A purification

CloneNo.:

2E10D3

Recommended Dilutions:

WB 1:2000-1:10000

IHC 1:250-1:1000

IF-P 1:200-1:800

IF/ICC 1:200-1:800

Applications

Tested Applications:

WB, IHC, IF/ICC, IF-P, ELISA

Cited Applications:

WB, IHC, IF, IP

Species Specificity:

human, mouse, rat, pig, rabbit

Cited Species:

human, mouse, rat

Note-IHC: suggested antigen retrieval with TE buffer pH 9.0; (*) Alternatively, antigen retrieval may be performed with citrate buffer pH 6.0

Positive Controls:

WB : HepG2 cells, HL-60 cells, HSC-T6 cells, NIH/3T3 cells, pig spleen tissue, rabbit spleen tissue, Jurkat cells, Raji cells, K-562 cells

IHC : human liver tissue, mouse liver tissue

IF-P : mouse liver tissue,

IF/ICC : A431 cells,

Background Information

MYD88 is a cytosolic adapter protein that plays a central role in the innate and adaptive immune response. MYD88 is the key adaptor protein for the interleukin-1 receptor (IL-1R) and most Toll-like receptors (TLRs), which are essential for innate immunity and pathogen-associated molecular pattern recognition. Mutations in the MyD88 gene lead to the development of cancer in humans and mice suggesting that MyD88 also plays a cell autonomous role in tissue homeostasis.

Notable Publications

Author	Pubmed ID	Journal	Application
Ting Xu	36079919	Nutrients	WB
Shuming Li	36446234	Int Immunopharmacol	WB
Honghong Zhan	36552516	Antioxidants (Basel)	WB

Storage

Storage:

Store at -20°C. Stable for one year after shipment.

Storage Buffer:

PBS with 0.02% sodium azide and 50% glycerol pH 7.3.

Aliquoting is unnecessary for -20°C storage

For technical support and original validation data for this product please contact:

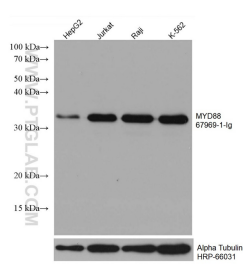
T: 4006900926

E: Proteintech-CN@ptglab.com

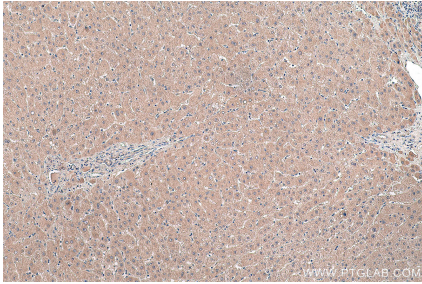
W: ptgcn.com

This product is exclusively available under Proteintech Group brand and is not available to purchase from any other manufacturer.

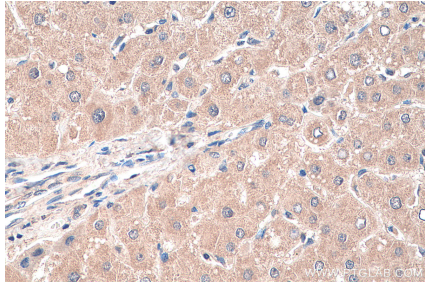
Selected Validation Data



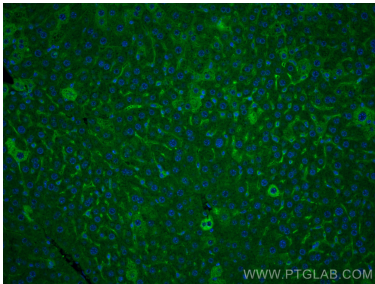
Various lysates were subjected to SDS PAGE followed by western blot with 67969-1-Ig (MYD88 antibody) at dilution of 1:5000 incubated at room temperature for 1.5 hours. The membrane was stripped and reblotted with HRP-conjugated Alpha Tubulin Monoclonal antibody (HRP-66031) as loading control.



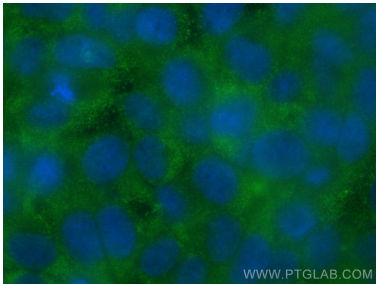
Immunohistochemical analysis of paraffin-embedded human liver tissue slide using 67969-1-Ig (MYD88 antibody) at dilution of 1:500 (under 10x lens). Heat mediated antigen retrieval with Tris-EDTA buffer (pH 9.0).



Immunohistochemical analysis of paraffin-embedded human liver tissue slide using 67969-1-Ig (MYD88 antibody) at dilution of 1:500 (under 40x lens). Heat mediated antigen retrieval with Tris-EDTA buffer (pH 9.0).



Immunofluorescent analysis of (4% PFA) fixed mouse liver tissue using MYD88 antibody (67969-1-Ig, Clone: 2E10D3) at dilution of 1:400 and CoraLite®488-Conjugated AffiniPure Goat Anti-Mouse IgG(H+L).



Immunofluorescent analysis of (-20°C Methanol) fixed A431 cells using MYD88 antibody (67969-1-Ig, Clone: 2E10D3) at dilution of 1:400 and CoraLite®488-Conjugated Goat Anti-Mouse IgG(H+L) (SA00013-1).