

For Research Use Only

# ABCE1 Monoclonal antibody, PBS Only



Catalog Number: 67960-1-PBS

## Basic Information

Catalog Number: 67960-1-PBS	GenBank Accession Number: BC016283	Purification Method: Protein A purification
Size: 1 mg/ml	GeneID (NCBI): 6059	CloneNo.: 1B7E8
Source: Mouse	UNIPROT ID: P61221	
Isotype: IgG2b	Full Name: ATP-binding cassette, sub-family E (OABP), member 1	
Immunogen Catalog Number: AG28493	Calculated MW: 599 aa, 67 kDa	
	Observed MW: 68 kDa	

## Applications

Tested Applications:  
WB, Indirect ELISA, IHC, IF

Species Specificity:  
Human, Mouse, Rat

## Background Information

ABCE1 is an ATPase that is a member of the ATP-binding cassette (ABC) transporters superfamily and OABP subfamily, it is an essential and highly conserved protein that is required for both eukaryotic translation initiation as well as ribosome biogenesis.

## Storage

Storage:  
Store at -80°C.  
The product is shipped with ice packs. Upon receipt, store it immediately at -80°C

Storage Buffer:  
PBS Only

For technical support and original validation data for this product please contact:

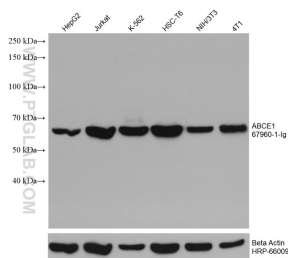
T: 4006900926

E: [Proteintech-CN@ptglab.com](mailto:Proteintech-CN@ptglab.com)

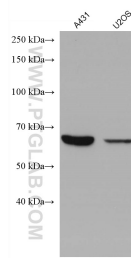
W: [ptgcn.com](http://ptgcn.com)

This product is exclusively available under Proteintech Group brand and is not available to purchase from any other manufacturer.

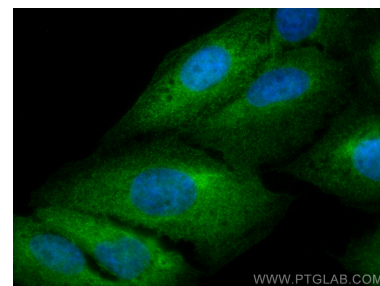
## Selected Validation Data



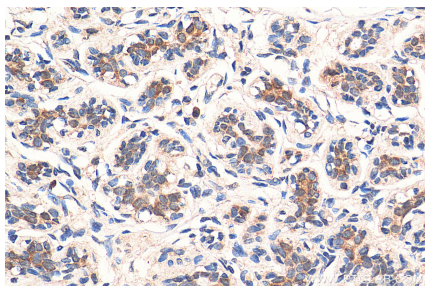
Various lysates were subjected to SDS PAGE followed by western blot with 67960-1-Ig (ABCE1 antibody) at dilution of 1:10000 incubated at room temperature for 1.5 hours. The membrane was stripped and reblotted with HRP-conjugated Beta Actin Monoclonal antibody (HRP-66009) as loading control. This data was developed using the same antibody clone with 67960-1-PBS in a different storage buffer formulation.



Various lysates were subjected to SDS PAGE followed by western blot with 67960-1-Ig (ABCE1 antibody) at dilution of 1:10000 incubated at room temperature for 1.5 hours. This data was developed using the same antibody clone with 67960-1-PBS in a different storage buffer formulation.



Immunofluorescent analysis of (4% PFA) fixed U2OS cells using ABCE1 antibody (67960-1-Ig, Clone: 1B7E8 ) at dilution of 1:400 and CoraLite®488-Conjugated AffiniPure Goat Anti-Mouse IgG(H+L). This data was developed using the same antibody clone with 67960-1-PBS in a different storage buffer formulation.



Immunohistochemical analysis of paraffin-embedded human breast cancer tissue slide using 67960-1-Ig (ABCE1 antibody) at dilution of 1:1000 (under 40x lens). Heat mediated antigen retrieval with Tris-EDTA buffer (pH 9.0). This data was developed using the same antibody clone with 67960-1-PBS in a different storage buffer formulation.