

For Research Use Only

# ATG16L1 Monoclonal antibody, PBS Only



Catalog Number: 67943-1-PBS

## Basic Information

<b>Catalog Number:</b> 67943-1-PBS	<b>GenBank Accession Number:</b> BC000061	<b>Purification Method:</b> Protein G purification
<b>Size:</b> 1 mg/ml	<b>GeneID (NCBI):</b> 55054	<b>CloneNo.:</b> 1G5G7
<b>Source:</b> Mouse	<b>UNIPROT ID:</b> Q676U5	
<b>Isotype:</b> IgG1	<b>Full Name:</b> ATG16 autophagy related 16-like 1 (S. cerevisiae)	
<b>Immunogen Catalog Number:</b> AG14881	<b>Calculated MW:</b> 607 aa, 68 kDa	
	<b>Observed MW:</b> 68-75 kDa	

## Applications

**Tested Applications:**  
WB,IF,ELISA

**Species Specificity:**  
Human, mouse, rat

## Background Information

Human ATG16L1 is a 607 amino acid protein (~68 kDa) comprising three major domains: the N-terminal ATG5 binding domain (ATG5 - BD), the central coiled-coil domain (CCD) and a predicted C-terminal WD40-domain. ATG16L1  $\alpha$  and  $\beta$  (Atg16L1  $\alpha$ , 63 kDa; and Atg16L1  $\beta$ , 71 kDa) are the major isoforms expressed in intestinal epithelium and macrophages, and all isoforms encode exon 9, which contains Thr 300. Atg16L1 mediates the cellular degradative process of autophagy and is considered a critical regulator of inflammation based on its genetic association with inflammatory bowel disease. ATG16L1 has been implicated in Crohn's disease. (PMID: 24553140, PMID: 22740627, PMID: 28685931)

## Storage

**Storage:**  
Store at -20°C. Stable for one year after shipment.

**Storage Buffer:**  
PBS only

Aliquoting is unnecessary for -20°C storage

For technical support and original validation data for this product please contact:

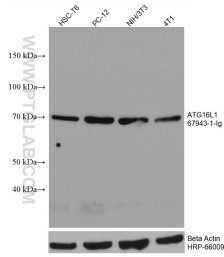
T: 4006900926

E: [Proteintech-CN@ptglab.com](mailto:Proteintech-CN@ptglab.com)

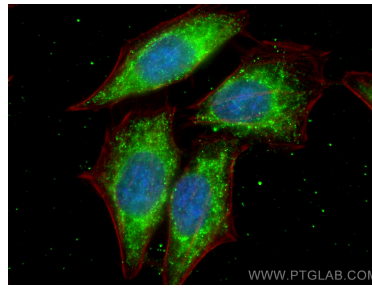
W: [ptgcn.com](http://ptgcn.com)

This product is exclusively available under Proteintech Group brand and is not available to purchase from any other manufacturer.

## Selected Validation Data



Various lysates were subjected to SDS PAGE followed by western blot with 67943-1-ig (ATG16L1 antibody) at dilution of 1:3000 incubated at room temperature for 1.5 hours. The membrane was stripped and reblotted with HRP-conjugated Beta Actin Monoclonal antibody (HRP-66009) as loading control. This data was developed using the same antibody clone with 67943-1-PBS in a different storage buffer formulation.



Immunofluorescent analysis of (-20°C Ethanol) fixed HepG2 cells using ATG16L1 antibody (67943-1-ig, Clone: 1G5G7) at dilution of 1:400 and CoraLite®488-Conjugated AffiniPure Goat Anti-Mouse IgG(H+L), CL594-Phalloidin (red). This data was developed using the same antibody clone with 67943-1-PBS in a different storage buffer formulation.