

For Research Use Only

CARS Monoclonal antibody

Catalog Number: 67933-1-Ig



Basic Information

Catalog Number:

67933-1-Ig

Size:

1000 µg/ml

Source:

Mouse

Isotype:

IgG2b

Immunogen Catalog Number:

AG7651

GenBank Accession Number:

BC002880

GeneID (NCBI):

833

UNIPROT ID:

P49589

Full Name:

cysteinyI-tRNA synthetase

Calculated MW:

89 kDa

Observed MW:

70-85 kDa

Purification Method:

Protein A purification

CloneNo.:

2F7E4

Recommended Dilutions:

WB 1:5000-1:50000

IF 1:200-1:800

Applications

Tested Applications:

IF/ICC, WB, ELISA

Species Specificity:

Human, mouse, rat

Positive Controls:

WB : A431 cells, A549 cells, HSC-T6 cells, NIH/3T3 cells, HepG2 cells, Jurkat cells, K-562 cells

IF : HepG2 cells,

Background Information

Storage

Storage:

Store at -20°C. Stable for one year after shipment.

Storage Buffer:

PBS with 0.02% sodium azide and 50% glycerol pH 7.3.

Aliquoting is unnecessary for -20°C storage

For technical support and original validation data for this product please contact:

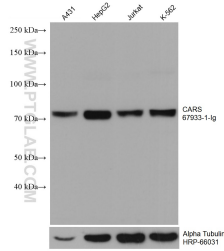
T: 4006900926

E: Proteintech-CN@ptglab.com

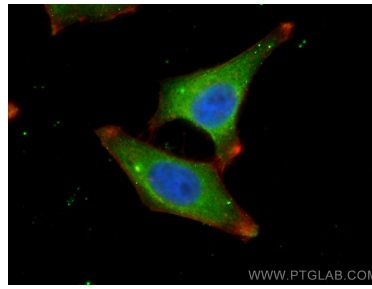
W: ptgcn.com

This product is exclusively available under Proteintech Group brand and is not available to purchase from any other manufacturer.

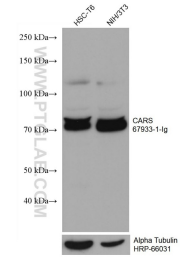
Selected Validation Data



Various lysates were subjected to SDS PAGE followed by western blot with 67933-1-Ig (CARS antibody) at dilution of 1:20000 incubated at room temperature for 1.5 hours. The membrane was stripped and reblotted with HRP-conjugated Alpha Tubulin Monoclonal antibody (HRP-66031) as loading control.



Immunofluorescent analysis of (4% PFA) fixed HepG2 cells using CARS antibody (67933-1-Ig, Clone: 2F7E4) at dilution of 1:400 and CoraLite®488-Conjugated AffiniPure Goat Anti-Mouse IgG(H+L), CL594-Phalloidin (red).



Various lysates were subjected to SDS PAGE followed by western blot with 67933-1-Ig (CARS antibody) at dilution of 1:20000 incubated at room temperature for 1.5 hours. The membrane was stripped and reblotted with HRP-conjugated Alpha Tubulin Monoclonal antibody (HRP-66031) as loading control.