

# PSME1 Monoclonal antibody

Catalog Number: 67928-1-Ig

Featured Product

## Basic Information

**Catalog Number:**

67928-1-Ig

**Size:**

1000 µg/ml

**Source:**

Mouse

**Isotype:**

IgG1

**Immunogen Catalog Number:**

AG30549

**GenBank Accession Number:**

BC007503

**GeneID (NCBI):**

5720

**UNIPROT ID:**

Q06323

**Full Name:**proteasome (prosome, macropain)  
activator subunit 1 (PA28 alpha)**Calculated MW:**

29 kDa

**Observed MW:**

29 kDa

**Purification Method:**

Protein G purification

**CloneNo.:**

1F7E2

**Recommended Dilutions:**

WB 1:5000-1:50000

IF/ICC 1:500-1:2000

## Applications

**Tested Applications:**

WB, IF/ICC, ELISA

**Species Specificity:**

Human, mouse, rat

**Positive Controls:**WB : MDA-MB-231 cells, Hela cells, HEK-293 cells,  
Jurkat cells, k-562 cells, HSC-T6 cells, C6 cells,  
NIH/3T3 cells and 4T1 cells.

IF/ICC : MCF-7 cells,

## Background Information

The principal function of the proteasome is targeted degradation of intracellular proteins. Activity of the 20S proteasome is controlled by regulatory complexes that bind to the ends of the cylindrical proteasome. 11S regulator (REG or PA28), is a complex of 28 kDa subunits that is thought to activate proteasomes toward the production of antigenic peptides. Human PSME1 and PSME2 genes encode the two proteasome activators PA28 alpha and beta, respectively, which have been implicated in antigen processing for loading class I MHC molecules. The PA28 activator complex enhances the generation of class I binding peptides by altering the cleavage pattern of the proteasome.

## Storage

**Storage:**

Store at -20°C. Stable for one year after shipment.

**Storage Buffer:**

PBS with 0.02% sodium azide and 50% glycerol pH 7.3.

Aliquoting is unnecessary for -20°C storage

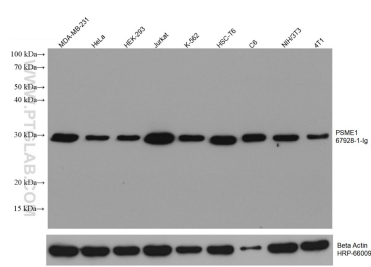
For technical support and original validation data for this product please contact:

T: 4006900926

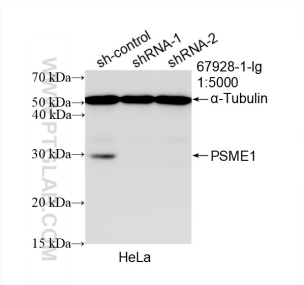
E: [Proteintech-CN@ptglab.com](mailto:Proteintech-CN@ptglab.com)W: [ptgcn.com](http://ptgcn.com)

This product is exclusively available under Proteintech Group brand and is not available to purchase from any other manufacturer.

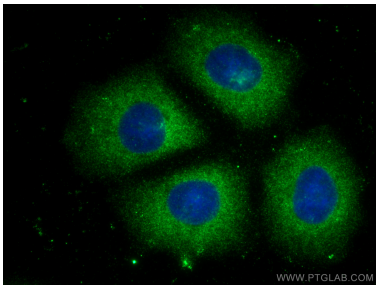
Selected Validation Data



Various lysates were subjected to SDS PAGE followed by western blot with 67928-1-Ig (PSME1 antibody) at dilution of 1:10000 incubated at room temperature for 1.5 hours. The membrane was stripped and reblotted with HRP-conjugated Beta Actin Monoclonal antibody (HRP-66009) as loading control.



WB result of PSME1 antibody (67928-1-Ig; 1:5000; incubated at room temperature for 1.5 hours) with sh-Control and sh-PSME1 transfected HeLa cells.



Immunofluorescent analysis of (-20°C Methanol) fixed MCF-7 cells using PSME1 antibody (67928-1-Ig, Clone: 1F7E2 ) at dilution of 1:1000 and CoraLite®488-Conjugated AffiniPure Goat Anti-Mouse IgG(H+L).