

## NXF1 Monoclonal antibody, PBS Only

Catalog Number: 67914-1-PBS

## Basic Information

## Catalog Number:

67914-1-PBS

## Size:

1 mg/ml

## Source:

Mouse

## Isotype:

IgG1

## Immunogen Catalog Number:

AG27329

## GenBank Accession Number:

BC004904

## GeneID (NCBI):

10482

## UNIPROT ID:

Q9UBU9

## Full Name:

nuclear RNA export factor 1

## Calculated MW:

70 kDa

## Observed MW:

67 kDa

## Purification Method:

Protein G purification

## CloneNo.:

2C2H1

## Applications

## Tested Applications:

WB, Indirect ELISA, IF

## Species Specificity:

Human

## Background Information

Nuclear RNA export factor 1 (NXF1, synonyms: TAP, MEX67) is one member of a family of nuclear RNA export factors. Common domain features of this family are a noncanonical RNP-type RNA-binding domain (RBD), 4 leucine-rich repeats (LRRs), a nuclear transport factor 2 (NTF2)-like domain that allows heterodimerization with NTF2-related export protein-1 (NXT1), and a ubiquitin-associated domain that mediates interactions with nucleoporins. The LRRs and NTF2-like domains are required for export activity. This protein shuttles between the nucleus and the cytoplasm and binds in vivo to poly(A)<sup>+</sup> RNA. It is the vertebrate homologue of the yeast protein Mex67p. NXF1 overcomes the mRNA export block caused by the presence of saturating amounts of CTE (constitutive transport element) RNA of type D retroviruses.

## Storage

## Storage:

Store at -80°C.

**The product is shipped with ice packs. Upon receipt, store it immediately at -80°C**

## Storage Buffer:

PBS Only

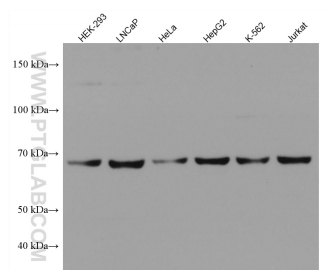
For technical support and original validation data for this product please contact:

T: 4006900926

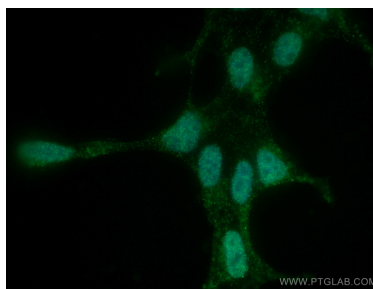
E: [Proteintech-CN@ptglab.com](mailto:Proteintech-CN@ptglab.com)W: [ptgcn.com](http://ptgcn.com)

This product is exclusively available under Proteintech Group brand and is not available to purchase from any other manufacturer.

## Selected Validation Data



Various lysates were subjected to SDS PAGE followed by western blot with 67914-1-Ig (NXF1 antibody) at dilution of 1:5000 incubated at room temperature for 1.5 hours. This data was developed using the same antibody clone with 67914-1-PBS in a different storage buffer formulation.



Immunofluorescent analysis of (4% PFA) fixed HEK-293 cells using NXF1 antibody (67914-1-Ig, Clone: 2C2H1) at dilution of 1:2000 and CoraLite®488-Conjugated AffiniPure Goat Anti-Mouse IgG(H+L). This data was developed using the same antibody clone with 67914-1-PBS in a different storage buffer formulation.