

NXF1 Monoclonal antibody

Catalog Number: 67914-1-Ig

Basic Information

Catalog Number:

67914-1-Ig

Size:

1000 µg/ml

Source:

Mouse

Isotype:

IgG1

Immunogen Catalog Number:

AG27329

GenBank Accession Number:

BC004904

GeneID (NCBI):

10482

UNIPROT ID:

Q9UBU9

Full Name:

nuclear RNA export factor 1

Calculated MW:

70 kDa

Observed MW:

67 kDa

Purification Method:

Protein G purification

CloneNo.:

2C2H1

Recommended Dilutions:

WB 1:2000-1:10000

IF/ICC 1:1000-1:4000

Applications

Tested Applications:

IF/ICC, WB, ELISA

Species Specificity:

Human

Positive Controls:

WB : HEK-293 cells, LNcap cells, Hela cells, HepG2 cells, K-562 cells, Jurkat cells

IF/ICC : HEK-293 cells,

Background Information

Nuclear RNA export factor 1 (NXF1, synonyms: TAP, MEX67) is one member of a family of nuclear RNA export factors. Common domain features of this family are a noncanonical RNP-type RNA-binding domain (RBD), 4 leucine-rich repeats (LRRs), a nuclear transport factor 2 (NTF2)-like domain that allows heterodimerization with NTF2-related export protein-1 (NXT1), and a ubiquitin-associated domain that mediates interactions with nucleoporins. The LRRs and NTF2-like domains are required for export activity. This protein shuttles between the nucleus and the cytoplasm and binds in vivo to poly(A)⁺ RNA. It is the vertebrate homologue of the yeast protein Mex67p. NXF1 overcomes the mRNA export block caused by the presence of saturating amounts of CTE (constitutive transport element) RNA of type D retroviruses.

Storage

Storage:

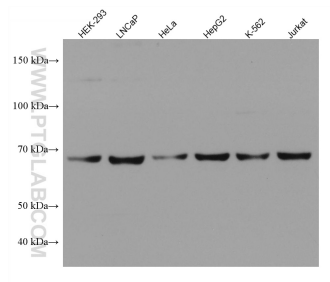
Store at -20°C. Stable for one year after shipment.

Storage Buffer:

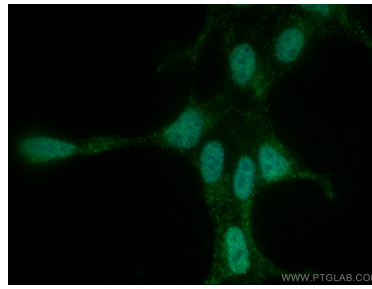
PBS with 0.02% sodium azide and 50% glycerol pH 7.3.

Aliquoting is unnecessary for -20°C storage

Selected Validation Data



Various lysates were subjected to SDS PAGE followed by western blot with 67914-1-Ig (NXF1 antibody) at dilution of 1:5000 incubated at room temperature for 1.5 hours.



Immunofluorescent analysis of (4% PFA) fixed HEK-293 cells using NXF1 antibody (67914-1-Ig, Clone: 2C2H1) at dilution of 1:2000 and CoraLite®488-Conjugated AffiniPure Goat Anti-Mouse IgG(H+L).