

For Research Use Only

# METTL7A Monoclonal antibody, PBS Only



Catalog Number: 67905-1-PBS

Featured Product

## Basic Information

Catalog Number:

67905-1-PBS

Size:

1mg/ml

Source:

Mouse

Isotype:

IgG1

Immunogen Catalog Number:

AG29986

GenBank Accession Number:

BC008180

GeneID (NCBI):

25840

UNIPROT ID:

Q9H8H3

Full Name:

methyltransferase like 7A

Calculated MW:

28 kDa

Observed MW:

28 kDa

Purification Method:

Protein A purification

CloneNo.:

1A9B4

## Applications

Tested Applications:

Indirect ELISA, IHC, WB

Species Specificity:

rabbit, rat, mouse, human

## Background Information

methyltransferase like 7A (METTL7A) is a 244 amino acid protein which belongs to the methyltransferase super family. Methyltransferase can transfer a methyl group from a donor to an acceptor. Methylation may be linked to cancer development as methylation of tumor suppressor genes promotes tumorigenesis and metastasis.

## Storage

Storage:

Store at -80°C.

The product is shipped with ice packs. Upon receipt, store it immediately at -80°C

Storage Buffer:

PBS Only

For technical support and original validation data for this product please contact:

T: 4006900926

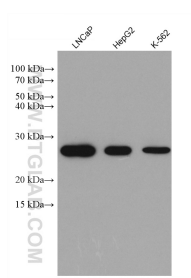
E: [Proteintech-CN@ptglab.com](mailto:Proteintech-CN@ptglab.com)

W: [ptgcn.com](http://ptgcn.com)

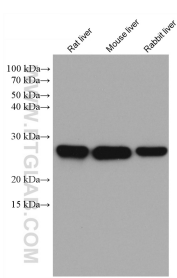
This product is exclusively available under Proteintech Group brand and is not available to purchase from any other manufacturer.



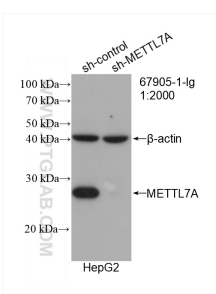
Selected Validation Data



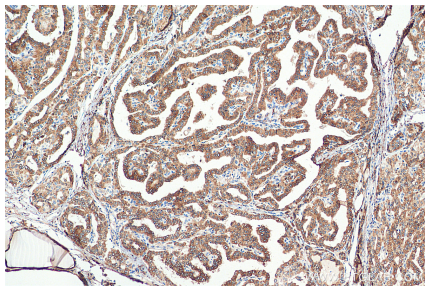
Various lysates were subjected to SDS PAGE followed by western blot with 67905-1-Ig (METTL7A antibody) at dilution of 1:10000 incubated at room temperature for 1.5 hours. This data was developed using the same antibody clone with 67905-1-PBS in a different storage buffer formulation.



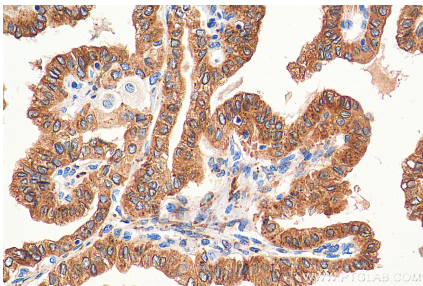
Various lysates were subjected to SDS PAGE followed by western blot with 67905-1-Ig (METTL7A antibody) at dilution of 1:10000 incubated at room temperature for 1.5 hours. This data was developed using the same antibody clone with 67905-1-PBS in a different storage buffer formulation.



WB result of METTL7A antibody (67905-1-Ig; 1:2000; incubated at room temperature for 1.5 hours) with sh-Control and sh-METTL7A transfected HepG2 cells. This data was developed using the same antibody clone with 67905-1-PBS in a different storage buffer formulation.



Immunohistochemical analysis of paraffin-embedded human thyroid cancer tissue slide using 67905-1-Ig (METTL7A antibody) at dilution of 1:1000 (under 10x lens). Heat mediated antigen retrieval with Tris-EDTA buffer (pH 9.0). This data was developed using the same antibody clone with 67905-1-PBS in a different storage buffer formulation.



Immunohistochemical analysis of paraffin-embedded human thyroid cancer tissue slide using 67905-1-Ig (METTL7A antibody) at dilution of 1:1000 (under 40x lens). Heat mediated antigen retrieval with Tris-EDTA buffer (pH 9.0). This data was developed using the same antibody clone with 67905-1-PBS in a different storage buffer formulation.