

# METTL7A Monoclonal antibody

Catalog Number: 67905-1-Ig

Featured Product

1 Publications

## Basic Information

## Catalog Number:

67905-1-Ig

## Size:

1000 µg/ml

## Source:

Mouse

## Isotype:

IgG1

## Immunogen Catalog Number:

AG29986

## GenBank Accession Number:

BC008180

## GeneID (NCBI):

25840

## UNIPROT ID:

Q9H8H3

## Full Name:

methyltransferase like 7A

## Calculated MW:

28 kDa

## Observed MW:

28 kDa

## Purification Method:

Protein A purification

## CloneNo.:

1A9B4

## Recommended Dilutions:

WB 1:5000-1:50000

IHC 1:500-1:2000

## Applications

## Tested Applications:

WB, IHC, ELISA

## Cited Applications:

WB

## Species Specificity:

human, mouse, rat, rabbit

## Cited Species:

human

**Note-IHC: suggested antigen retrieval with TE buffer pH 9.0; (\*) Alternatively, antigen retrieval may be performed with citrate buffer pH 6.0**

## Positive Controls:

**WB**: rat liver tissue, LNCaP cells, mouse lung tissue, HepG2 cells, K-562 cells, mouse liver tissue, rabbit liver tissue

**IHC**: human thyroid cancer tissue, human liver cancer tissue

## Background Information

methyltransferase like 7A (METTL7A) is a 244 amino acid protein which belongs to the methyltransferase super family. Methyltransferase can transfer a methyl group from a donor to an acceptor. Methylation may be linked to cancer development as methylation of tumor suppressor genes promotes tumorigenesis and metastasis.

## Notable Publications

Author	Pubmed ID	Journal	Application
Yizhou Jin	38782892	Int J Oral Sci	WB

## Storage

## Storage:

Store at -20°C. Stable for one year after shipment.

## Storage Buffer:

PBS with 0.02% sodium azide and 50% glycerol pH 7.3.

Aliquoting is unnecessary for -20°C storage

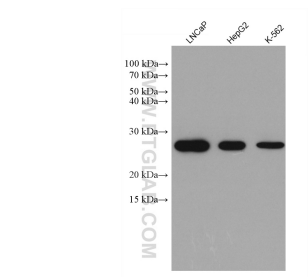
For technical support and original validation data for this product please contact:

T: 4006900926

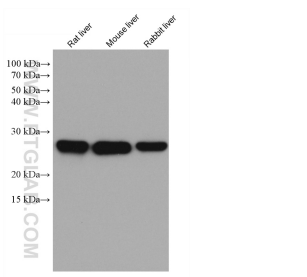
E: [Proteintech-CN@ptglab.com](mailto:Proteintech-CN@ptglab.com)W: [ptgcn.com](http://ptgcn.com)

**This product is exclusively available under Proteintech Group brand and is not available to purchase from any other manufacturer.**

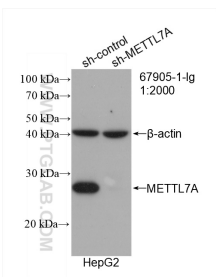
Selected Validation Data



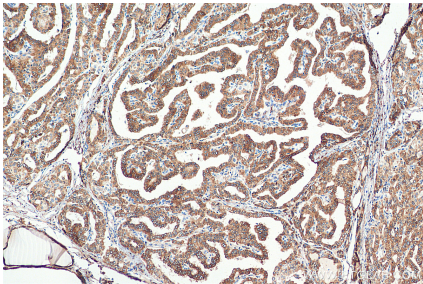
Various lysates were subjected to SDS PAGE followed by western blot with 67905-1-Ig (METTL7A antibody) at dilution of 1:10000 incubated at room temperature for 1.5 hours.



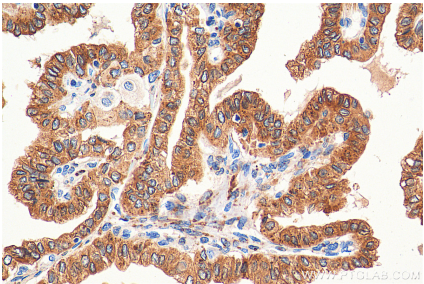
Various lysates were subjected to SDS PAGE followed by western blot with 67905-1-Ig (METTL7A antibody) at dilution of 1:10000 incubated at room temperature for 1.5 hours.



WB result of METTL7A antibody (67905-1-Ig; 1:2000; incubated at room temperature for 1.5 hours) with sh-Control and sh-METTL7A transfected HepG2 cells.



Immunohistochemical analysis of paraffin-embedded human thyroid cancer tissue slide using 67905-1-Ig (METTL7A antibody) at dilution of 1:1000 (under 10x lens). Heat mediated antigen retrieval with Tris-EDTA buffer (pH 9.0).



Immunohistochemical analysis of paraffin-embedded human thyroid cancer tissue slide using 67905-1-Ig (METTL7A antibody) at dilution of 1:1000 (under 40x lens). Heat mediated antigen retrieval with Tris-EDTA buffer (pH 9.0).