

For Research Use Only

Phospho-P53 (Ser46) Monoclonal antibody, PBS Only (Detector)

Catalog Number: 67900-1-PBS



Basic Information

Catalog Number:

67900-1-PBS

Size:

1000 ug/ml

Source:

Mouse

Isotype:

IgG1

GenBank Accession Number:

BC003596

GeneID (NCBI):

7157

UNIPROT ID:

P04637

Full Name:

tumor protein p53

Calculated MW:

44 kDa

Observed MW:

53 kDa

Purification Method:

Protein G purification

CloneNo.:

1D10A12

Applications

Tested Applications:

WB, IHC, IF/ICC, FC (Intra), Cytometric bead array, Indirect ELISA

Species Specificity:

human

Background Information

P53 is activated in response to alteration of normal cell homeostasis, including DNA damage, nutrient starvation, heat shock, virus infection, pH change, hypoxia, and oncogene activation. P53 maintains genetic stability by regulating different processes, such as cell-cycle arrest, DNA synthesis and repair, programmed cell death, and energy metabolism. In non-stressed conditions these proteins bind p53, ubiquitylate it and target it for degradation by the proteasome. In stressed conditions the function of the Mdm2-Mdm4 complex is blocked by phosphorylation, protein-binding events and/or enhanced degradation. (PMID: 19935675, PMID: 24379683)

Storage

Storage:

Store at -80°C.

The product is shipped with ice packs. Upon receipt, store it immediately at -80°C

Storage Buffer:

PBS Only

For technical support and original validation data for this product please contact:

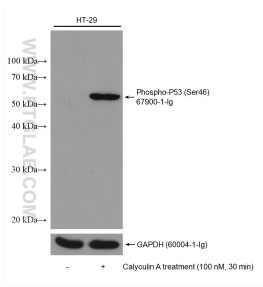
T: 4006900926

E: Proteintech-CN@ptglab.com

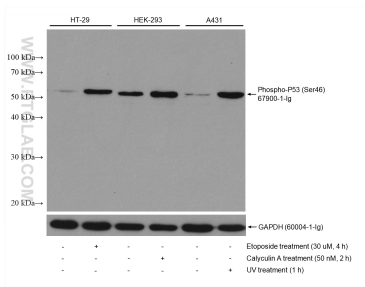
W: ptgcn.com

This product is exclusively available under Proteintech Group brand and is not available to purchase from any other manufacturer.

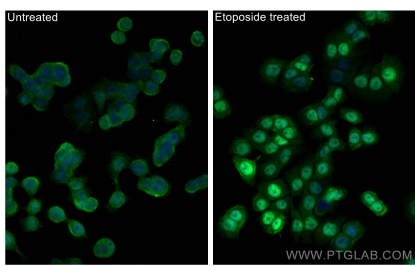
Selected Validation Data



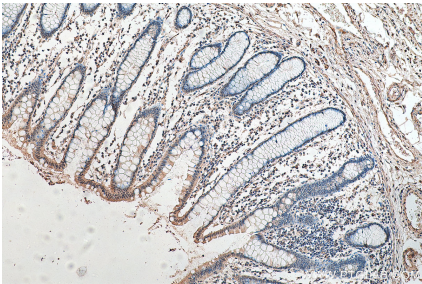
Non-treated and Calyculin A treated HT-29 cells were subjected to SDS PAGE followed by western blot with 67900-1-Ig (Phospho-P53 (Ser46) antibody) at dilution of 1:10000 incubated at room temperature for 1.5 hours. The membrane was stripped and re-blotted with GAPDH antibody as loading control. This data was developed using the same antibody clone with 67900-1-PBS in a different storage buffer formulation.



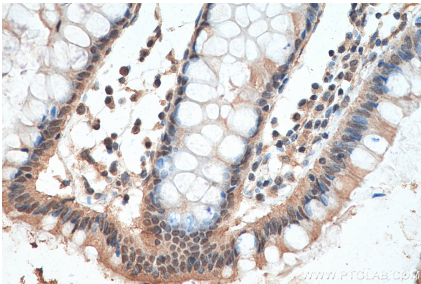
Various lysates were subjected to SDS PAGE followed by western blot with 67900-1-Ig (Phospho-P53 (Ser46) antibody) at dilution of 1:10000 incubated at room temperature for 1.5 hours. The membrane was stripped and re-blotted with GAPDH antibody as loading control. This data was developed using the same antibody clone with 67900-1-PBS in a different storage buffer formulation.



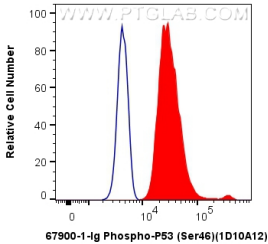
Immunofluorescent analysis of (4% PFA) fixed etoposide treated HT-29 cells using Phospho-P53 (Ser46) antibody (67900-1-Ig, Clone: 1D10A12) at dilution of 1:400 and CoraLite®488-Conjugated AffiniPure Goat Anti-Mouse IgG(H+L). This data was developed using the same antibody clone with 67900-1-PBS in a different storage buffer formulation.



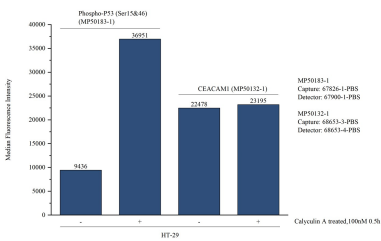
Immunohistochemical analysis of paraffin-embedded human colon cancer tissue slide using 67900-1-Ig (Phospho-P53 (Ser46) antibody) at dilution of 1:1000 (under 10x lens). Heat mediated antigen retrieval with Tris-EDTA buffer (pH 9.0). This data was developed using the same antibody clone with 67900-1-PBS in a different storage buffer formulation.



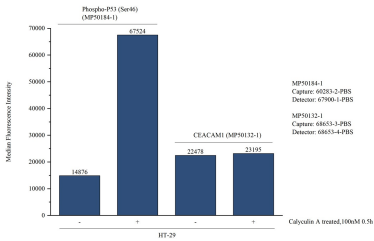
Immunohistochemical analysis of paraffin-embedded human colon cancer tissue slide using 67900-1-Ig (Phospho-P53 (Ser46) antibody) at dilution of 1:1000 (under 40x lens). Heat mediated antigen retrieval with Tris-EDTA buffer (pH 9.0). This data was developed using the same antibody clone with 67900-1-PBS in a different storage buffer formulation.



1X10⁶ HT-29 cells were intracellularly stained with 0.4 ug Anti-Human Phospho-P53 (Ser46) (67900-1-Ig, Clone: 1D10A12) and CoraLite®488-Conjugated AffiniPure Goat Anti-Mouse IgG(H+L) at dilution 1:1000 (red), or 0.4 ug Mouse IgG1 Isotype Control (MOPC-21) (65124-1-Ig, Clone: MOPC-21) (blue). Cells were fixed and permeabilized with Transcription Factor Staining Buffer Kit (PF00011). This data was developed using the same antibody clone with 67900-1-PBS in a



Cytometric bead array in cell lysate using MP50183-1, Phospho-P53 (Ser15&46) Monoclonal Matched Antibody Pair, PBS Only. Capture antibody: 67826-1-PBS. Detection antibody: 67900-1-PBS. Cell lysate: Non-treated HT-29 and Calyculin A treated HT-29 (30 u g/well). Non-related target CEACAM1 Monoclonal Matched Antibody Pair (MP50132-1) was served as control.



Cytometric bead array in cell lysate using MP50184-1, Phospho-P53 (Ser46) Monoclonal Matched Antibody Pair, PBS Only. Capture antibody: 60283-2-PBS. Detection antibody: 67900-1-PBS. Cell lysate: Non-treated HT-29 and Calyculin A treated HT-29 (30 u g/well). Non-related target CEACAM1 Monoclonal Matched Antibody Pair (MP50132-1) was served as control.