

For Research Use Only

KBTBD2 Monoclonal antibody

Catalog Number: 67895-1-Ig

Featured Product

1 Publications



Basic Information

Catalog Number:

67895-1-Ig

Size:

1000 μ g/ml

Source:

Mouse

Isotype:

IgG1

Immunogen Catalog Number:

AG4933

GenBank Accession Number:

BC047107

GeneID (NCBI):

25948

UNIPROT ID:

Q8IY47

Full Name:

kelch repeat and BTB (POZ) domain containing 2

Calculated MW:

622 aa, 71 kDa

Observed MW:

60-70 kDa

Purification Method:

Protein G purification

CloneNo.:

2A9F3

Recommended Dilutions:

WB 1:1000-1:6000

IF 1:200-1:800

Applications

Tested Applications:

IF/ICC, WB, ELISA

Cited Applications:

WB, IHC

Species Specificity:

Human, mouse, rat

Cited Species:

human, mouse

Positive Controls:

WB : A549 cells, U2OS cells, HeLa cells, K-562 cells, Jurkat cells, HSC-T6 cells

IF : HeLa cells,

Background Information

Kelch repeat and BTB domain containing 2 (KBTBD2), also known as BTB and kelch domain-containing protein 1, encodes a BTB-Kelch family subunit that p85 α -specific recognition for the Cullin3-based E3 ubiquitin ligase complex, which regulates p85 α protein ubiquitination and subsequently regulates phosphoinositide-3 kinases (PI3K) signaling (PMID:27708159). However, the expression profile and functional significance of Kbtbd2 is still largely unknown. The Human Protein Atlas which is an online source shows high Kbtbd2 expression in the spleen and thymus, suggesting that Kbtbd2 might involved in immunization (PMID:29331106). In addition, Kbtbd2 is related to Src-induced phosphorylation of protein, spermatogonial stem cell activity (PMID:15623525, 29331106).

Notable Publications

Author	Pubmed ID	Journal	Application
Jishuang Ding	38237399	Pathol Res Pract	WB, IHC

Storage

Storage:

Store at -20°C. Stable for one year after shipment.

Storage Buffer:

PBS with 0.02% sodium azide and 50% glycerol pH 7.3.

Aliquoting is unnecessary for -20°C storage

For technical support and original validation data for this product please contact:

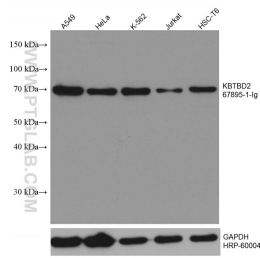
T: 4006900926

E: Proteintech-CN@ptglab.com

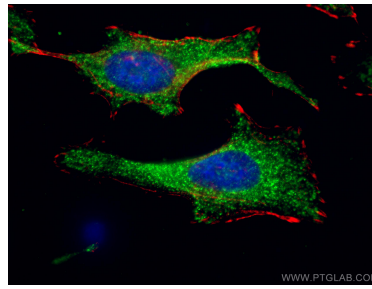
W: ptgcn.com

This product is exclusively available under Proteintech Group brand and is not available to purchase from any other manufacturer.

Selected Validation Data



Various lysates were subjected to SDS PAGE followed by western blot with 67895-1-Ig (KBTBD2 antibody) at dilution of 1:3000 incubated at room temperature for 1.5 hours. The membrane was stripped and reblotted with HRP-conjugated GAPDH Monoclonal antibody (HRP-60004) as loading control.



Immunofluorescent analysis of (-20°C Ethanol) fixed HeLa cells using KBTBD2 antibody (67895-1-Ig, Clone: 2A9F3) at dilution of 1:400 and CoraLite®488-Conjugated AffiniPure Goat Anti-Mouse IgG(H+L), CL594-Phalloidin (red). DAPI (blue).