

ARL8B Monoclonal antibody

Catalog Number: 67891-1-Ig

Basic Information

Catalog Number:

67891-1-Ig

Size:

1000 µg/ml

Source:

Mouse

Isotype:

IgG2a

Immunogen Catalog Number:

AG3711

GenBank Accession Number:

BC013131

GeneID (NCBI):

55207

UNIPROT ID:

Q9NVJ2

Full Name:

ADP-ribosylation factor-like 8B

Calculated MW:

186 aa, 22 kDa

Observed MW:

22 kDa

Purification Method:

Protein A purification

CloneNo.:

2G10E2

Recommended Dilutions:

WB 1:5000-1:50000

IF/ICC 1:1000-1:4000

Applications

Tested Applications:

WB, IF/ICC, ELISA

Species Specificity:

Human, mouse, rat, pig

Positive Controls:

WB : K-562 cells, Jurkat cells, HSC-T6 cells, NIH/3T3 cells, LNCaP cells, pig brain tissue, rat brain tissue

IF/ICC : A549 cells,

Background Information

ARL8B (ADP-ribosylation factor-like 8B) , also known as ARL10C or GIE1, is a small GTPase of the Arl-family, that is associated with the lysosome. ARL8A interacts with Tubulin, and plays a role in lysosome motility, as well as in chromosomal segregation. ARL8B plays a role in the spatial distribution and positioning of lysosomes. ARL8B is regarded as a regulator of endosome to lysosome trafficking pathways of special significance for host defense.

Storage

Storage:

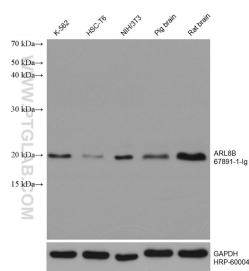
Store at -20°C. Stable for one year after shipment.

Storage Buffer:

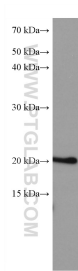
PBS with 0.02% sodium azide and 50% glycerol pH 7.3.

Aliquoting is unnecessary for -20°C storage

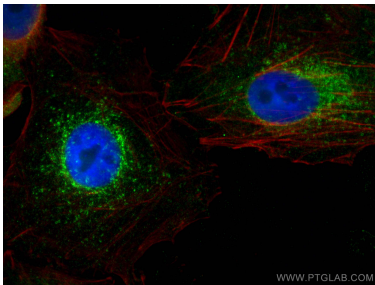
Selected Validation Data



Various lysates were subjected to SDS PAGE followed by western blot with 67891-1-Ig (ARL8B antibody) at dilution of 1:10000 incubated at room temperature for 1.5 hours. The membrane was stripped and reblotted with HRP-conjugated GAPDH Monoclonal antibody (HRP-60004) as loading control.



LNCaP cells were subjected to SDS PAGE followed by western blot with 67891-1-Ig (ARL8B antibody) at dilution of 1:10000 incubated at room temperature for 1.5 hours.



Immunofluorescent analysis of (4% PFA) fixed A549 cells using ARL8B antibody (67891-1-Ig, Clone: 2G10E2) at dilution of 1:2000 and CoraLite®488-Conjugated AffiniPure Goat Anti-Mouse IgG(H+L), CL594-phalloidin (red).