

For Research Use Only

KDM1B Monoclonal antibody

Catalog Number: 67886-1-Ig



Basic Information

Catalog Number:

67886-1-Ig

Size:

1000 µg/ml

Source:

Mouse

Isotype:

IgG2b

Immunogen Catalog Number:

AG30672

GenBank Accession Number:

NM_001364614

GeneID (NCBI):

221656

UNIPROT ID:

Q8NB78

Full Name:

amine oxidase (flavin containing)
domain 1

Calculated MW:

92 kDa

Observed MW:

92 kDa

Purification Method:

Protein A purification

CloneNo.:

1E1A3

Recommended Dilutions:

WB 1:1000-1:6000

Applications

Tested Applications:

WB, FC (Intra), ELISA

Species Specificity:

human, mouse, rat

Positive Controls:

WB : HCT 116 cells, K-562 cells, C6 cells, NIH/3T3 cells,
A549 cells, HeLa cells, Jurkat cells

Background Information

Storage

Storage:

Store at -20°C. Stable for one year after shipment.

Storage Buffer:

PBS with 0.02% sodium azide and 50% glycerol pH 7.3.

Aliquoting is unnecessary for -20°C storage

For technical support and original validation data for this product please contact:

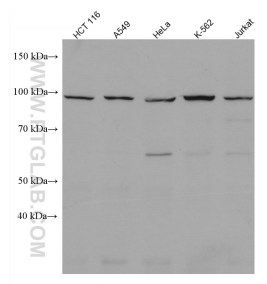
T: 4006900926

E: Proteintech-CN@ptglab.com

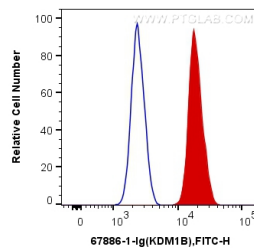
W: ptgcn.com

This product is exclusively available under Proteintech Group brand and is not available to purchase from any other manufacturer.

Selected Validation Data



HCT 116 cells were subjected to SDS PAGE followed by western blot with 67886-1-Ig (KDM1B antibody) at dilution of 1:3000 incubated at room temperature for 1.5 hours.



1X10⁶ SW 1990 cells were intracellularly stained with 0.4 ug Anti-HUMAN KDM1B (67886-1-Ig, Clone:1E1A3) and CoraLite®488-Conjugated AffiniPure Goat Anti-Mouse IgG(H+L) at dilution 1:1000 (red), or 0.4 ug Control Antibody. Cells were fixed and permeabilized with Transcription Factor Staining Buffer Kit (PF00011).