

For Research Use Only

LPCAT3 Monoclonal antibody

Catalog Number: 67882-1-Ig

Featured Product

20 Publications



Basic Information

Catalog Number:

67882-1-Ig

Concentration:

1000 µg/ml

Source:

Mouse

Isotype:

IgG1

Immunogen Catalog Number:

AG6472

GenBank Accession Number:

BC065194

GeneID (NCBI):

10162

UNIPROT ID:

Q6P1A2

Full Name:

lysophosphatidylcholine
acyltransferase 3

Calculated MW:

56 kDa

Observed MW:

56 kDa

Purification Method:

Protein A purification

CloneNo.:

1C1G3

Recommended Dilutions:

WB 1:1000-1:6000

IHC 1:150-1:600

Applications

Tested Applications:

WB, IHC, ELISA

Cited Applications:

WB, IF

Species Specificity:

human, pig

Cited Species:

human, rat

**Note-IHC: suggested antigen retrieval with
TE buffer pH 9.0; (*) Alternatively, antigen
retrieval may be performed with citrate
buffer pH 6.0**

Positive Controls:

WB : pig stomach tissue, HepG2 cells

IHC : human stomach tissue, human small intestine
tissue

Background Information

Lysophosphatidylcholine acyltransferases (LPCATs) are among the lysophospholipid acyltransferases (LPLATs) that play an important role in lipid metabolism and homeostasis by regulating the abundance of different phosphatidylcholine (PC) species. Lysophosphatidylcholine acyltransferase 3 (LPCAT3) is a member of the LPCAT family that primarily regulates the levels of arachidonic PC species. LPCAT3 is abundantly expressed in the testes, kidneys, and metabolic tissues, including the liver, intestine, and adipose tissues. LPCAT3 is involved in the occurrence and development of atherosclerosis, intestinal tumors, and nonalcoholic steatohepatitis (NASH)(PMID: 35711841).

Notable Publications

Author	Pubmed ID	Journal	Application
Jie Gu	36334344	Ecotoxicol Environ Saf	WB
Cuilan Gong	39731833	Phytomedicine	WB
Renyi Yang	39674355	J Ethnopharmacol	WB

Storage

Storage:

Store at -20°C. Stable for one year after shipment.

Storage Buffer:

PBS with 0.02% sodium azide and 50% glycerol pH 7.3.

Aliquoting is unnecessary for -20°C storage

For technical support and original validation data for this product please contact:

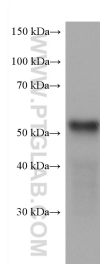
T: 4006900926

E: Proteintech-CN@ptglab.com

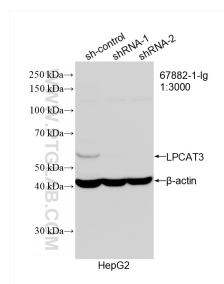
W: ptgcn.com

This product is exclusively available under Proteintech Group brand and is not available to purchase from any other manufacturer.

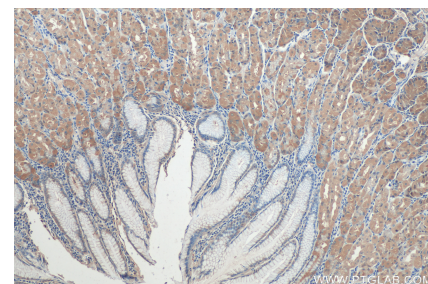
Selected Validation Data



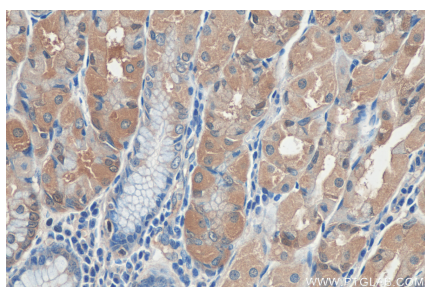
pig stomach tissue were subjected to SDS PAGE followed by western blot with 67882-1-Ig (LPCAT3 antibody) at dilution of 1:3000 incubated at room temperature for 1.5 hours.



WB result of LPCAT3 antibody (67882-1-Ig; 1:3000; incubated at room temperature for 1.5 hours) with sh-Control and sh-LPCAT3 transfected HepG2 cells.



Immunohistochemical analysis of paraffin-embedded human stomach tissue slide using 67882-1-Ig (LPCAT3 antibody) at dilution of 1:300 (under 10x lens). Heat mediated antigen retrieval with Tris-EDTA buffer (pH 9.0).



Immunohistochemical analysis of paraffin-embedded human stomach tissue slide using 67882-1-Ig (LPCAT3 antibody) at dilution of 1:300 (under 40x lens). Heat mediated antigen retrieval with Tris-EDTA buffer (pH 9.0).