

For Research Use Only

# Cyclophilin A Monoclonal antibody, PBS Only



Catalog Number: 67880-1-PBS

## Basic Information

Catalog Number:

67880-1-PBS

Size:

1mg/ml

Source:

Mouse

Isotype:

IgG1

Immunogen Catalog Number:

AG1120

GenBank Accession Number:

BC005320

GeneID (NCBI):

5478

UNIPROT ID:

P62937

Full Name:

peptidylprolyl isomerase A  
(cyclophilin A)

Calculated MW:

18 kDa

Observed MW:

18 kDa

Purification Method:

Protein A purification

CloneNo.:

2B11B9

## Applications

Tested Applications:

ELISA, IF/ICC, WB

Species Specificity:

rat, mouse, human

## Background Information

Cyclophilin A, also named as PPIA and Rotamase A, belongs to the cyclophilin-type PPIase family and PPIase A subfamily. PPIases accelerate the folding of proteins. It catalyzes the cis-trans isomerization of proline imidic peptide bonds in oligopeptides. PPIA forms a trimolecular complex with cyclophilin and calcineurins to inhibit calcineurin phosphatase activity. PPIA is incorporated into the virion of the type 1 human immunodeficiency virus (HIV-1) via a direct interaction with the capsid domain of the viral Gag polyprotein and is crucial for efficient viral replication.

## Storage

Storage:

Store at -80°C.

The product is shipped with ice packs. Upon receipt, store it immediately at -80°C

Storage Buffer:

PBS Only

For technical support and original validation data for this product please contact:

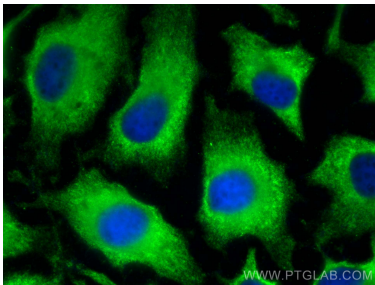
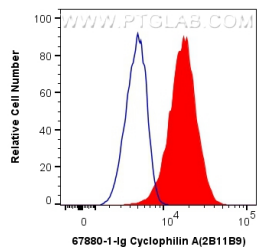
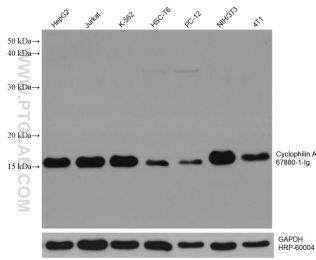
T: 4006900926

E: [Proteintech-CN@ptglab.com](mailto:Proteintech-CN@ptglab.com)

W: [ptgcn.com](http://ptgcn.com)

This product is exclusively available under Proteintech Group brand and is not available to purchase from any other manufacturer.

Selected Validation Data



Various lysates were subjected to SDS PAGE followed by western blot with 67880-1-Ig (CYPA antibody) at dilution of 1:20000 incubated at room temperature for 1.5 hours. The membrane was stripped and reblotted with HRP-conjugated GAPDH Monoclonal antibody (HRP-60004) as loading control. This data was developed using the same antibody clone with 67880-1-PBS in a different storage buffer formulation.

1X10<sup>6</sup> HeLa cells were intracellularly stained with 0.4 ug Anti-Human Cyclophilin A (67880-1-Ig, Clone:2B11B9) and CoraLite®488-Conjugated AffiniPure Goat Anti-Mouse IgG(H+L) at dilution 1:1000 (red), or 0.4 ug Mouse IgG1 Isotype Control (MOPC-21) (65124-1-Ig, Clone: MOPC-21) (blue). Cells were fixed with 4% PFA and permeabilized with Flow Cytometry Perm Buffer (PF00011-C). This data was developed using the same antibody clone with 67880-1-PBS in a

Immunofluorescent analysis of (-20°C Methanol) fixed HeLa cells using Cyclophilin A antibody (67880-1-Ig, Clone: 2B11B9 ) at dilution of 1:400 and CoraLite®488-Conjugated AffiniPure Goat Anti-Mouse IgG(H+L). This data was developed using the same antibody clone with 67880-1-PBS in a different storage buffer formulation.