

For Research Use Only

# TMP21 Monoclonal antibody

Catalog Number: 67876-1-Ig



## Basic Information

Catalog Number:

67876-1-Ig

Size:

1000 ug/ml

Source:

Mouse

Isotype:

IgG2b

Immunogen Catalog Number:

AG7516

GenBank Accession Number:

BC001825

GeneID (NCBI):

10972

UNIPROT ID:

P49755

Full Name:

transmembrane emp24-like  
trafficking protein 10 (yeast)

Calculated MW:

25 kDa

Observed MW:

21 kDa

Purification Method:

Protein A purification

CloneNo.:

3B11F9

Recommended Dilutions:

WB 1:5000-1:50000

IHC 1:1000-1:4000

IF/ICC 1:400-1:1600

## Applications

Tested Applications:

WB, IHC, IF/ICC, FC (Intra), ELISA

Species Specificity:

human, mouse, rat, pig

**Note-IHC: suggested antigen retrieval with  
TE buffer pH 9.0; (\*) Alternatively, antigen  
retrieval may be performed with citrate  
buffer pH 6.0**

Positive Controls:

WB : A549 cells, pig liver tissue, HeLa cells, HepG2  
cells, Jurkat cells, Raji cells, rat liver tissue, mouse  
liver tissue

IHC : human colon cancer tissue, mouse brain tissue

IF/ICC : HeLa cells,

## Background Information

### Storage

Storage:

Store at -20°C. Stable for one year after shipment.

Storage Buffer:

PBS with 0.02% sodium azide and 50% glycerol pH 7.3.

Aliquoting is unnecessary for -20°C storage

For technical support and original validation data for this product please contact:

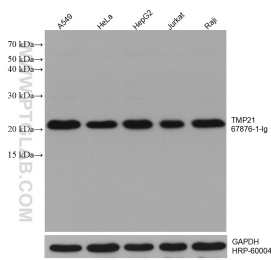
T: 4006900926

E: [Proteintech-CN@ptglab.com](mailto:Proteintech-CN@ptglab.com)

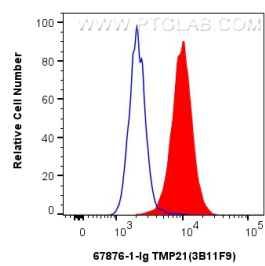
W: [ptgcn.com](http://ptgcn.com)

This product is exclusively available under Proteintech Group brand and is not available to purchase from any other manufacturer.

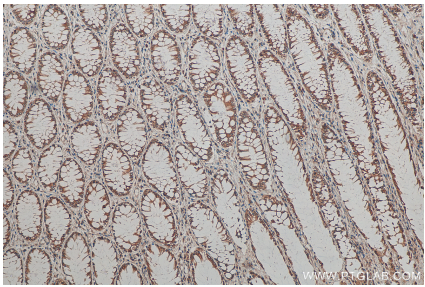
Selected Validation Data



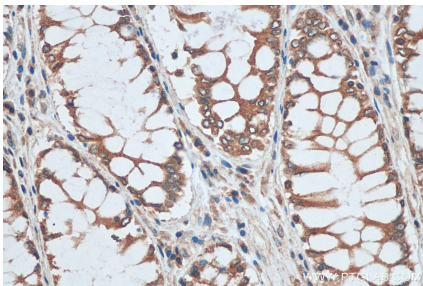
Various lysates were subjected to SDS PAGE followed by western blot with 67876-1-Ig (TMP21 antibody) at dilution of 1:20000 incubated at room temperature for 1.5 hours. The membrane was stripped and reblotted with HRP-conjugated GAPDH Monoclonal antibody (HRP-60004) as loading control.



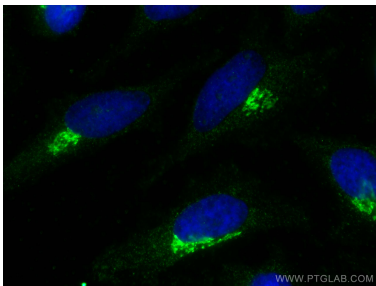
1x10<sup>6</sup> HeLa cells were intracellularly stained with 0.4 ug TMP21 Monoclonal antibody (67876-1-Ig, Clone:3B11F9) and CoraLite®488-Conjugated Goat Anti-Mouse IgG(H+L) (SA00013-1)(red), or 0.4 ug Mouse IgG2b isotype control Mouse McAb (66360-3-Ig, Clone: 11B8C4) (blue). Cells were fixed with 4% PFA and permeabilized with Flow Cytometry Perm Buffer (PF00011-C).



Immunohistochemical analysis of paraffin-embedded human colon cancer tissue slide using 67876-1-Ig (TMP21 antibody) at dilution of 1:2000 (under 10x lens). Heat mediated antigen retrieval with Tris-EDTA buffer (pH 9.0).



Immunohistochemical analysis of paraffin-embedded human colon cancer tissue slide using 67876-1-Ig (TMP21 antibody) at dilution of 1:2000 (under 40x lens). Heat mediated antigen retrieval with Tris-EDTA buffer (pH 9.0).



Immunofluorescent analysis of (-20°C Methanol) fixed HeLa cells using TMP21 antibody (67876-1-Ig, Clone: 3B11F9 ) at dilution of 1:800 and CoraLite®488-Conjugated AffiniPure Goat Anti-Mouse IgG(H+L).