

For Research Use Only

MEK1 Monoclonal antibody

Catalog Number: 67872-1-Ig

Featured Product

1 Publications



Basic Information

Catalog Number:

67872-1-Ig

Size:

1000 µg/ml

Source:

Mouse

Isotype:

IgG1

GenBank Accession Number:

BC139729

GeneID (NCBI):

5604

ENSEMBL Gene ID:

ENSG00000169032

UNIPROT ID:

Q02750

Full Name:

mitogen-activated protein kinase kinase 1

Calculated MW:

43 kDa

Observed MW:

40-50 kDa

Purification Method:

Protein G purification

CloneNo.:

3F6D7

Recommended Dilutions:

WB 1:2000-1:10000

Applications

Tested Applications:

WB, ELISA

Cited Applications:

WB

Species Specificity:

Human, rat, mouse

Cited Species:

rat

Positive Controls:

WB : A431 cells, Calyculin A treated HeLa cells, NIH/3T3 cells, HSC-T6 cells, Calyculin A treated PC-3 cells

Background Information

MEK1 is also named as MAP2K1 (mitogen-activated protein kinase kinase 1), MAPKK1, PRKMK1, MKK1 and belongs to the MAP kinase kinase subfamily. It is a dual-specificity kinase that mediate ERK1 and ERK2 activation during adhesion and growth factor signaling (PMID:19219045). It also plays an essential role in extra-embryonic ectoderm during placentogenesis.

Notable Publications

Author	Pubmed ID	Journal	Application
Yin Wang	36693549	J Ethnopharmacol	WB

Storage

Storage:

Store at -20°C. Stable for one year after shipment.

Storage Buffer:

PBS with 0.02% sodium azide and 50% glycerol pH 7.3.

Aliquoting is unnecessary for -20°C storage

For technical support and original validation data for this product please contact:

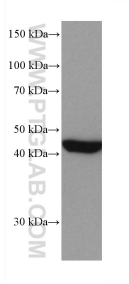
T: 4006900926

E: Proteintech-CN@ptglab.com

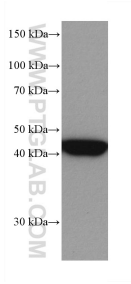
W: ptgcn.com

This product is exclusively available under Proteintech Group brand and is not available to purchase from any other manufacturer.

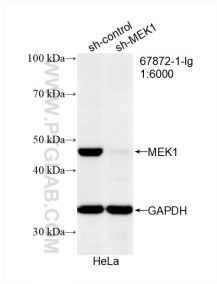
Selected Validation Data



A431 cells were subjected to SDS PAGE followed by western blot with 67872-1-Ig (MEK1 antibody) at dilution of 1:5000 incubated at room temperature for 1.5 hours.



Calyculin A treated HeLa cells were subjected to SDS PAGE followed by western blot with 67872-1-Ig (Phospho-MEK1 (Thr292) antibody) at dilution of 1:5000 incubated at room temperature for 1.5 hours.



WB result of MEK1 antibody (67872-1-Ig; 1:6000; incubated at room temperature for 1.5 hours) with sh-Control and sh-MEK1 transfected HeLa cells.