

For Research Use Only

HSP47/SERPINH1 Monoclonal antibody, PBS Only (Detector)

Catalog Number: 67863-1-PBS



Basic Information

Catalog Number:

67863-1-PBS

Size:

1mg/ml

Source:

Mouse

Isotype:

IgG1

Immunogen Catalog Number:

AG30999

GenBank Accession Number:

BC014623

GeneID (NCBI):

871

UNIPROT ID:

P50454

Full Name:

serpin peptidase inhibitor, clade H
(heat shock protein 47), member 1,
(collagen binding protein 1)

Calculated MW:

46 kDa

Observed MW:

46 kDa

Purification Method:

Protein A purification

CloneNo.:

2A8F6

Applications

Tested Applications:

WB, IHC, IF/ICC, Cytometric bead array, Indirect ELISA

Species Specificity:

human, mouse, rat

Background Information

Storage

Storage:

Store at -80°C.

The product is shipped with ice packs. Upon receipt, store it immediately at -80°C

Storage Buffer:

PBS Only

For technical support and original validation data for this product please contact:

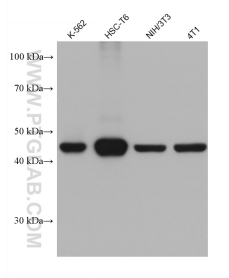
T: 4006900926

E: Proteintech-CN@ptglab.com

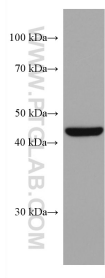
W: ptgcn.com

This product is exclusively available under Proteintech Group brand and is not available to purchase from any other manufacturer.

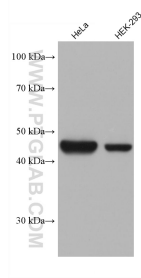
Selected Validation Data



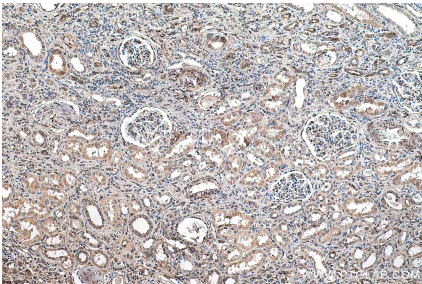
Various lysates were subjected to SDS PAGE followed by western blot with 67863-1-Ig (HSP47 antibody) at dilution of 1:20000 incubated at room temperature for 1.5 hours. This data was developed using the same antibody clone with 67863-1-PBS in a different storage buffer formulation.



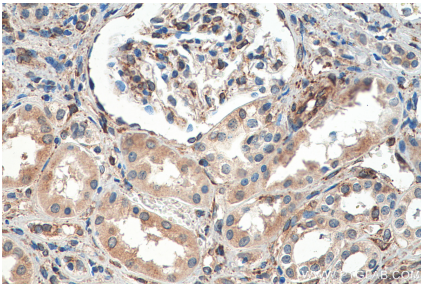
NIH/3T3 cells were subjected to SDS PAGE followed by western blot with 67863-1-Ig (SERPINH1 antibody) at dilution of 1:20000 incubated at room temperature for 1.5 hours. This data was developed using the same antibody clone with 67863-1-PBS in a different storage buffer formulation.



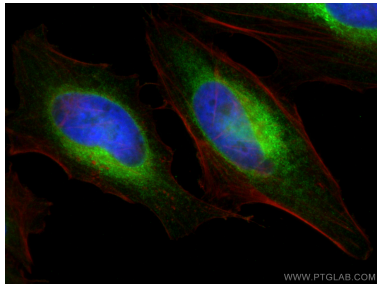
Various lysates were subjected to SDS PAGE followed by western blot with 67863-1-Ig (HSP47 antibody) at dilution of 1:20000 incubated at room temperature for 1.5 hours. This data was developed using the same antibody clone with 67863-1-PBS in a different storage buffer formulation.



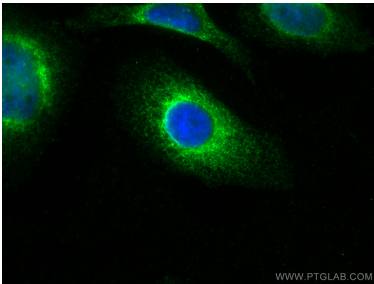
Immunohistochemical analysis of paraffin-embedded human renal cell carcinoma tissue slide using 67863-1-Ig (HSP47 antibody) at dilution of 1:2000 (under 10x lens). Heat mediated antigen retrieval with Tris-EDTA buffer (pH 9.0). This data was developed using the same antibody clone with 67863-1-PBS in a different storage buffer formulation.



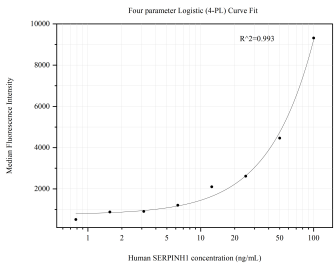
Immunohistochemical analysis of paraffin-embedded human renal cell carcinoma tissue slide using 67863-1-Ig (HSP47 antibody) at dilution of 1:2000 (under 40x lens). Heat mediated antigen retrieval with Tris-EDTA buffer (pH 9.0). This data was developed using the same antibody clone with 67863-1-PBS in a different storage buffer formulation.



Immunofluorescent analysis of (4% PFA) fixed HeLa cells using HSP47 antibody (67863-1-Ig, Clone: 2A8F6) at dilution of 1:800 and CoraLite®488-Conjugated AffiniPure Goat Anti-Mouse IgG(H+L), CL594-Phalloidin (red). This data was developed using the same antibody clone with 67863-1-PBS in a different storage buffer formulation.



Immunofluorescent analysis of (-20°C Ethanol) fixed HepG2 cells using HSP47 antibody (67863-1-Ig, Clone: 2A8F6) at dilution of 1:800 and CoraLite®488-Conjugated AffiniPure Goat Anti-Mouse IgG(H+L). This data was developed using the same antibody clone with 67863-1-PBS in a different storage buffer formulation.



Cytometric bead array standard curve of MP50781-1, HSP47/SERPINH1 Monoclonal Matched Antibody Pair, PBS Only. Capture antibody: 67863-2-PBS. Detection antibody: 67863-1-PBS. Standard: Ag30999. Range: 0.781-100 ng/mL.