

For Research Use Only

# GSTM1 Monoclonal antibody, PBS Only (Capture)

Catalog Number: 67862-2-PBS



## Basic Information

<b>Catalog Number:</b> 67862-2-PBS	<b>GenBank Accession Number:</b> BC024005	<b>Purification Method:</b> Protein G purification
<b>Source:</b> Mouse	<b>GeneID (NCBI):</b> 2944	<b>CloneNo.:</b> 2A3E2
<b>Isotype:</b> IgG1	<b>UNIPROT ID:</b> P09488	
<b>Immunogen Catalog Number:</b> AG3113	<b>Full Name:</b> glutathione S-transferase mu 1	
	<b>Calculated MW:</b> 181 aa, 21 kDa	

## Applications

**Tested Applications:**  
Cytometric bead array, Indirect ELISA

**Species Specificity:**  
human

## Background Information

### Storage

**Storage:**  
Store at -80°C.  
**The product is shipped with ice packs. Upon receipt, store it immediately at -80°C**

**Storage Buffer:**  
PBS only, pH7.3

For technical support and original validation data for this product please contact:

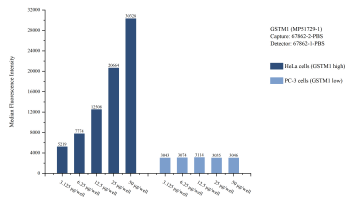
T: 4006900926

E: [Proteintech-CN@ptglab.com](mailto:Proteintech-CN@ptglab.com)

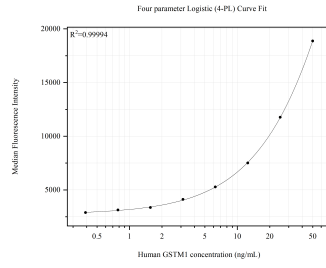
W: [ptgcn.com](http://ptgcn.com)

**This product is exclusively available under Proteintech Group brand and is not available to purchase from any other manufacturer.**

## Selected Validation Data



Cytometric bead array sample test of MP51729-1, GSTM1 Monoclonal Matched Antibody Pair, PBS Only. Capture antibody: 67862-2-PBS. Detection antibody: 67862-1-PBS.



Cytometric bead array standard curve of MP51729-1, GSTM1 Monoclonal Matched Antibody Pair, PBS Only. Capture antibody: 67862-2-PBS. Detection antibody: 67862-1-PBS. Standard: Ag3113. Range: 0.391-50 ng/mL.